

**REGULAR MEETING  
SUN VALLEY WATER & SEWER DISTRICT  
IN THE COUNCIL CHAMBER OF THE SUN VALLEY CITY HALL  
8:30 A.M, Monday, June 17, 2019**

\*ALL ITEMS LISTED ON THIS AGENDA ARE POTENTIAL ACTION ITEMS AND VOTES MAY BE TAKEN ON ANY ITEM LISTED\*

- **CALL TO ORDER**
- **APPROVAL OF MINUTES**  
Regular Meeting of May 20, 2019
- **FINANCIAL REPORT**
- **APPROVAL CHECK VOUCHERS AND PAYROLL**
  1. KSTP Operations – \$32,221.03
  2. RSCI Pay Request #12- \$90,919.14
  3. Paid Invoice Report 5/20/19-6/16/19 – \$259,593.94
  4. Payment Approval Report Unpaid over \$5000 excluding recurring - \$156,907.34
  5. Payroll 4/29/19–5/12/19 - \$12,685.48
  6. Payroll 5/13/19-5/26/19 - \$13,059.34
  7. Well Fargo Credit Card Statement - \$866.02
  
- **SEWER FLOWS FOR May 2019**

ELKHORN	7,133,000	
SUN VALLEY	15,464,000	
TOTAL	22,597,000	41.44%
KETCHUM	37,659,000	58.56%
  
- **KSTP REPORT**
- **WELL #13 BENEFICIAL USE FIELD REPORT**
- **LARRY'S LANE RESURFACE UPDATE**
  
- **EXECUTIVE SESSION**

Pursuant to, and subject to the limitation of, Idaho Code § 74-206, the Board of Directors may hold an executive session, upon the adoption, by roll call vote, of a motion to do so which includes a description of the exact purpose for which it is being held.
  
- **ADJOURNMENT**

Any person needing special accommodations to participate in the above noticed meeting should contact Sun Valley Water & Sewer District prior to the meeting at (208) 622-7610.

**SUN VALLEY WATER AND SEWER DISTRICT  
REGULAR MEETING OF THE BOARD OF DIRECTORS  
IN THE COUNCIL CHAMBERS OF THE SUN VALLEY CITY HALL  
Monday, May 20, 2019 - 8:30 a.m.**

**PRESENT**

Jim Loyd, Chairman  
Joseph K. Humphrey, Director  
Doug Brown, Director  
Rick Webking, Director

**ALSO PRESENT**

Patrick McMahon, General Manager  
Jeanene Parker, Treasurer  
Melissa McKenzie, Office Manager  
Evan Robertson, Attorney for the District  
Mick Mummert, Superintendent of the Ketchum Wastewater Treatment Plant  
Peter Hendricks, Mayor, City of Sun Valley  
Bryce Ternet, Community Development Director, City of Sun Valley  
Kristin Diggs, Auditor, Eide Bailly

**CALL TO ORDER**

Chairman Loyd called the Regular Meeting to order at 8:30 a.m.

**APPROVAL OF MINUTES**

Director Humphrey moved to approve the minutes of the regular meeting of March 18, 2019. Director Brown seconded the motion. All present were in favor.

**EIDE BAILLY**

Kristin Diggs presented the draft of the audit, for fiscal year 2017- 2018, for Sun Valley Water & Sewer District.

**FINANCIAL REPORT**

Treasurer Parker reported:  
-The audit is complete, final draft is due by end of May.  
  
-Treasurer Parker attended the State Tax Commission Annual Budget Meeting.  
  
-Capital reimbursements have decreased due to receiving a final LID payment. Salaries and related expenses decreased due to 3 pay periods in the month of May.  
  
-Debt services decreased due to McHannville LID payment.

-Summary balance sheet; cash decreased due to LID payment and decrease in County bond payments received.

-Accounts receivable decreased due to a decrease in customer payments. Quarterly billing is at the end of May.

-Other current assets increased due to ICRMP insurance prepayment.

-ICRMP Insurance quote states rate has gone up 7% to \$40,488.00 for next period. Director Webking approved.

Director Webking moved to approve to receive and file the financial statements for April. Director Brown seconded the motion. All present were in favor.

Director Webking moved to approve the payments over \$5000 on the payment approval report dated April 15, 2019-May 19, 2019, payroll ending 4/14/19 and payroll ending 5/28/19. Director Brown seconded the motion. All present were in favor.

Director Webking moved to approve the vendor list dated May 15, 2019. Director Brown seconded the motion. All present were in favor.

Director Webking moved to approve new vendor Eide Bailly. Director Brown seconded the motion. All present were in favor.

#### **KSTP REPORT**

Superintendent Mummert reported that the Headworks Project end is in sight. Fence has been reinstalled, working on the exterior of the building and the interior is complete. The reuse system was started recently and reuse water is being sent to Elkhorn and Weyyakin. Currently interviewing for a Lab Technician.

#### **WATERLINE UPSIZE REQUEST 1 WILDROSE LANE**

Director Humphrey moved to approve a two inch tap from Sun Valley Water & Sewer District main at 1 Wildrose Lane, Sun Valley, ID 83353. Rick Webking seconded the motion. All present were in favor.

#### **WELL #13 BENEFICIAL USE FIELD REPORT**

The final submission of the Well #13 documents occurred on May 1, 2019. Dan Nelson, the Water Rights Examiner at Idaho Department of Water Resources(IDWR), estimated a 30-day review process. This process needs to be completed prior to application for the Well #14 drilling permit.

#### **LARRY'S LANE RESURFACE**

Work is in progress on Larry's Lane, the base layer will be completed this week, and the asphalt will be installed when the weather permits. The cost for the project is being shared by the District, Sun Valley Company, and Idaho Power.

**WELL #14**

Manager McMahon met with Ben Pettit, Head of School at the Community School to discuss the Well #14 Project. The well is sited directly above the Lower School on the Trail Creek Campus, and will have a visual impact on the school. Mr. Pettit will review plans with the Facility Committee and the Board of Directors.

**WELL #3 UPGRADE**

Well #3 is a 400 gallon per minute, 47 horsepower well, drilled in 1948. It is a backup well used to meet peak summertime demands. Manager McMahon requested capital improvement funding to upgrade the well to meet IDWR metering requirements and to upgrade the control valve. Total cost including a vault for the meter will be \$18,835.00.

**DAN SPRINGER RETIREMENT**

Director Webking moved to approve a bonus payment of \$7,500 to Dan Springer upon termination. Director Brown seconded the motion. All present were in favor.

**2019 BOARD ELECTION**

No election was held. Director Stewart and Director Webking will retain their seats on The Board of Director for another 6 years.

**BLAINE COUNTY BOARD OF COMMISSIONERS SPECIAL MEETING**

General Manager McMahon reviewed meeting minutes from the Blaine County Board of Commissioners Special Meeting.

**ADJOURNMENT**

Having no further business to conduct, Chairman Loyd declared the meeting adjourned at 9:29 a.m.

\_\_\_\_\_  
Chairman, Jim Loyd

ATTEST:

\_\_\_\_\_  
Director, Doug Brown

**SUN VALLEY WATER & SEWER DISTRICT**

TO: PAT MCMAHON AND THE BOARD OF DIRECTORS

FROM: JEANENE PARKER

DATE: JUNE 17, 2019

SUBJECT: TREASURER'S REPORT

1. Department Accomplishments
2. Financial Results – Summary Dashboard
3. Financial Position – Balance Sheet
4. Capital Projects – Capital Water & Sewer Project Report
5. Cash Management
6. Vendor Changes
7. Budget Hearing



Sun Valley Water & Sewer District - Fiscal Year Ending November 30, 2019							
Format consistent with Approved Budget							
	4/30/2019	4/30/2018	5/31/2019	5/31/2018	FYTD	APPROVED BUDGET	PERCENT ACHIEVED
% Of Fiscal year that has elapsed>>>	42%		50%		42%		
<b>SUMMARY FINANCIAL DASHBOARD</b>							
<b>REVENUES</b>							
Water & Sewer Charges	5,746	5,168	358,899	358,092	1,117,792	1,604,860	69.65% QUARTERLY BILLING
Irrigation/Sprinkling Charges	902	2,747	58,686	83,029	60,803	840,000	7.24% QUARTERLY SPRINKLING - DOWN FROM LAST YEAR BY 29
Property Taxes - General	79,368	74,558	79,368	74,558	476,205	953,244	49.96%
Property Taxes - Water & Sewer Bonds	54,591	50,457	54,591	50,457	327,545	655,414	49.98%
State Sales Tax and Other Revenues	12,030	8,454	27,730	22,783	123,051	117,250	104.95%
McHanville LID	690	408	672	419	3,882	16,180	23.99%
Capital Reimbursements	1,197	0	0	0	9,259		DECREASE DUE TO NO OWNER LID PMTS
	<b>154,524</b>	<b>141,791</b>	<b>579,944</b>	<b>589,337</b>	<b>2,118,536</b>	<b>4,186,948</b>	<b>50.60%</b>
<b>EXPENDITURES</b>							
Salaries and Related Expenses	61,818	63,484	53,777	38,899	341,546	798,135	42.79% DECREASE DUE TO EMPLOYEE TERMINATION
Operating Expenses	42,142	39,568	70,878	38,136	261,732	981,405	26.67% INCREASE DUE TO AUDIT AND SEWER R/M EXPENSES
KSTP Expenses	52,502	39,635	32,221	45,406	217,246	709,000	30.64%
Capital Replacement						350,000	
Depreciation & Amortization	80,026	79,498	80,026	79,498	480,156	700,000	68.59%
Non Operating Expenditures-Debt Service	9,856	0	0	0	28,249	645,004	4.38% DECREASE DUE TO NO LID PMT
<b>Total Monthly Expenditures</b>	<b>246,342</b>	<b>222,183</b>	<b>236,902</b>	<b>201,939</b>	<b>1,328,929</b>	<b>4,183,544</b>	<b>31.77%</b>
<b>Monthly Excess of Revenues over Expenditures</b>	<b>-91,819</b>	<b>-80,392</b>	<b>343,042</b>	<b>387,399</b>	<b>789,607</b>	<b>3,404</b>	
<b>Running Excess/Deficit of Revenues over Expenditures</b>	<b>446,565</b>	<b>383,895</b>	<b>789,607</b>	<b>771,293</b>	<b>789,607</b>		
Capital Improvements	-132,528		-107,018		-876,838	-875,220	-1,618 Unspent
Use of (Addition to) Unappropriated Funds	224,347		-236,024		87,230		
<b>Net</b>	<b>-</b>	<b>-</b>	<b>-</b>	<b>-</b>	<b>(0)</b>	<b>(871,816.00)</b>	

SUN VALLEY WATER & SEWER DISTRICT COMPARISON JANUARY 2019

DECEMBER		JANUARY		FEBRUARY		MARCH		APRIL		MAY	
2018	2017	2019	2018	2019	2018	2019	2018	2019	2018	2019	2018
54,555	61,332	41,336	46,770	36,466	58,647	41,416	44,569	40,012	41,967	79,527	94,310
0	0	0	0	0	0	0	0	0	0	0	0
0	0	0	0	0	0	0	0	0	0	0	0
13,843	22,356	1,220	5,817	0	3,060	81	62	0	40	0	0
36,679	34,272	35,648	33,191	32,337	32,404	37,011	38,991	67,405	40,464	54,527	48,799
19,582	18,198	18,750	18,096	17,674	18,096	19,871	18,096	37,659	15,214	31,930	26,409
17,097	16,074	16,898	15,095	14,663	15,030	17,140	21,522	29,746	25,250	22,597	22,390
46.61%	46.90%	47.40%	45.48%	45.34%	46.38%	46.31%	55.20%	44.13%	62.40%	41.44%	45.88%
26,417	47,856	36,849	33,211	32,998	39,617	36,260	50,899	52,502	39,635	32,221	45,406
11,705	11,012	12,131	11,831	11,533	12,426	13,158	11,189	11,534	23,972	14,805	14,805
65,683	59,906	510,088	527,738	35,453	39,613	6,120	4,291	9,334	5,770	10,535	6,526
21,827	20,144	169,522	177,456	6,686	13,320	2,034	1,443	3,102	1,940	3,501	2,194
23,334	21,534	181,220	189,704	7,148	14,239	2,174	1,542	3,316	2,074	3,742	2,346
JUNE											
2018	2017	2018	2017	2018	2017	2018	2017	2018	2017	2018	2017
138,279	151,734	188,539	181,293	194,420	170,269	141,742	116,446	40,915	52,370	45,163	51,698
1,428	3,150	1,428	2,148	4,802	0	0	0	0	0	0	0
10,648	13,595	21,538	19,022	12,105	14,199	13,710	8,154	1,330	509	0	0
0	0	0	0	0	0	0	0	0	0	0	0
48,260	68,327	43,212	45,918	39,762	39,695	31,686	31,352	32,887	29,783	27,660	26,968
26,701	47,235	21,882	25,039	20,147	20,530	16,467	15,557	14,873	15,261	13,764	14,749
21,599	21,092	21,330	20,879	19,232	19,548	15,219	15,795	18,014	14,522	13,896	12,219
44.67%	30.87%	49.36%	45.47%	48.37%	51.65%	48.37%	50.38%	54.78%	48.76%	50.24%	45.31%
38,831	32,373	37,753	51,747	42,277	38,150	39,164	36,738	39,513	34,087	51,394	29,362
22,229	23,825	30,377	36,140	31,756	33,452	31,048	30,232	20,832	18,892	10,848	11,041
36,621	36,979	225,240	267,303	5,307	7,579	18,491	4,681	1,357	1,171	17,074	311
12,314	12,627	75,750	91,286	1,785	1,512	1,295	1,667	456	322	93	106
13,164	13,778	80,978	99,606	1,908	1,648	1,384	1,795	488	351	43	116
JULY											
2018	2017	2018	2017	2018	2017	2018	2017	2018	2017	2018	2017
138,279	151,734	181,293	194,420	170,269	141,742	116,446	40,915	52,370	45,163	51,698	51,698
1,428	3,150	1,428	2,148	4,802	0	0	0	0	0	0	0
10,648	13,595	21,538	19,022	12,105	14,199	13,710	8,154	1,330	509	0	0
0	0	0	0	0	0	0	0	0	0	0	0
48,260	68,327	43,212	45,918	39,762	39,695	31,686	31,352	32,887	29,783	27,660	26,968
26,701	47,235	21,882	25,039	20,147	20,530	16,467	15,557	14,873	15,261	13,764	14,749
21,599	21,092	21,330	20,879	19,232	19,548	15,219	15,795	18,014	14,522	13,896	12,219
44.67%	30.87%	49.36%	45.47%	48.37%	51.65%	48.37%	50.38%	54.78%	48.76%	50.24%	45.31%
38,831	32,373	37,753	51,747	42,277	38,150	39,164	36,738	39,513	34,087	51,394	29,362
22,229	23,825	30,377	36,140	31,756	33,452	31,048	30,232	20,832	18,892	10,848	11,041
36,621	36,979	225,240	267,303	5,307	7,579	18,491	4,681	1,357	1,171	17,074	311
12,314	12,627	75,750	91,286	1,785	1,512	1,295	1,667	456	322	93	106
13,164	13,778	80,978	99,606	1,908	1,648	1,384	1,795	488	351	43	116
AUGUST											
2018	2017	2018	2017	2018	2017	2018	2017	2018	2017	2018	2017
138,279	151,734	181,293	194,420	170,269	141,742	116,446	40,915	52,370	45,163	51,698	51,698
1,428	3,150	1,428	2,148	4,802	0	0	0	0	0	0	0
10,648	13,595	21,538	19,022	12,105	14,199	13,710	8,154	1,330	509	0	0
0	0	0	0	0	0	0	0	0	0	0	0
48,260	68,327	43,212	45,918	39,762	39,695	31,686	31,352	32,887	29,783	27,660	26,968
26,701	47,235	21,882	25,039	20,147	20,530	16,467	15,557	14,873	15,261	13,764	14,749
21,599	21,092	21,330	20,879	19,232	19,548	15,219	15,795	18,014	14,522	13,896	12,219
44.67%	30.87%	49.36%	45.47%	48.37%	51.65%	48.37%	50.38%	54.78%	48.76%	50.24%	45.31%
38,831	32,373	37,753	51,747	42,277	38,150	39,164	36,738	39,513	34,087	51,394	29,362
22,229	23,825	30,377	36,140	31,756	33,452	31,048	30,232	20,832	18,892	10,848	11,041
36,621	36,979	225,240	267,303	5,307	7,579	18,491	4,681	1,357	1,171	17,074	311
12,314	12,627	75,750	91,286	1,785	1,512	1,295	1,667	456	322	93	106
13,164	13,778	80,978	99,606	1,908	1,648	1,384	1,795	488	351	43	116
SEPTEMBER											
2018	2017	2018	2017	2018	2017	2018	2017	2018	2017	2018	2017
138,279	151,734	181,293	194,420	170,269	141,742	116,446	40,915	52,370	45,163	51,698	51,698
1,428	3,150	1,428	2,148	4,802	0	0	0	0	0	0	0
10,648	13,595	21,538	19,022	12,105	14,199	13,710	8,154	1,330	509	0	0
0	0	0	0	0	0	0	0	0	0	0	0
48,260	68,327	43,212	45,918	39,762	39,695	31,686	31,352	32,887	29,783	27,660	26,968
26,701	47,235	21,882	25,039	20,147	20,530	16,467	15,557	14,873	15,261	13,764	14,749
21,599	21,092	21,330	20,879	19,232	19,548	15,219	15,795	18,014	14,522	13,896	12,219
44.67%	30.87%	49.36%	45.47%	48.37%	51.65%	48.37%	50.38%	54.78%	48.76%	50.24%	45.31%
38,831	32,373	37,753	51,747	42,277	38,150	39,164	36,738	39,513	34,087	51,394	29,362
22,229	23,825	30,377	36,140	31,756	33,452	31,048	30,232	20,832	18,892	10,848	11,041
36,621	36,979	225,240	267,303	5,307	7,579	18,491	4,681	1,357	1,171	17,074	311
12,314	12,627	75,750	91,286	1,785	1,512	1,295	1,667	456	322	93	106
13,164	13,778	80,978	99,606	1,908	1,648	1,384	1,795	488	351	43	116
OCTOBER											
2018	2017	2018	2017	2018	2017	2018	2017	2018	2017	2018	2017
138,279	151,734	181,293	194,420	170,269	141,742	116,446	40,915	52,370	45,163	51,698	51,698
1,428	3,150	1,428	2,148	4,802	0	0	0	0	0	0	0
10,648	13,595	21,538	19,022	12,105	14,199	13,710	8,154	1,330	509	0	0
0	0	0	0	0	0	0	0	0	0	0	0
48,260	68,327	43,212	45,918	39,762	39,695	31,686	31,352	32,887	29,783	27,660	26,968
26,701	47,235	21,882	25,039	20,147	20,530	16,467	15,557	14,873	15,261	13,764	14,749
21,599	21,092	21,330	20,879	19,232	19,548	15,219	15,795	18,014	14,522	13,896	12,219
44.67%	30.87%	49.36%	45.47%	48.37%	51.65%	48.37%	50.38%	54.78%	48.76%	50.24%	45.31%
38,831	32,373	37,753	51,747	42,277	38,150	39,164	36,738	39,513	34,087	51,394	29,362
22,229	23,825	30,377	36,140	31,756	33,452	31,048	30,232	20,832	18,892	10,848	11,041
36,621	36,979	225,240	267,303	5,307	7,579	18,491	4,681	1,357	1,171	17,074	311
12,314	12,627	75,750	91,286	1,785	1,512	1,295	1,667	456	322	93	106
13,164	13,778	80,978	99,606	1,908	1,648	1,384	1,795	488	351	43	116
NOVEMBER											
2018	2017	2018	2017	2018	2017	2018	2017	2018	2017	2018	2017
138,279	151,734	181,293	194,420	170,269	141,742	116,446	40,915	52,370	45,163	51,698	51,698
1,428	3,150	1,428	2,148	4,802	0	0	0	0	0	0	0
10,648	13,595	21,538	19,022	12,105	14,199	13,710	8,154	1,330	509	0	

SUN VALLEY WATER & SEWER DIST  
BALANCE SHEET  
MAY 31, 2019

<u>ASSETS</u>		
CURRENT ASSETS		
CASH		
1-01-00	CASH - OPERATING CHECKING	88,562.76
1-02-00	CASH - 07 BOND FUND (2018)	528.37
1-04-00	CASH - 04 BOND FUND	561.74
1-05-00	CASH -04 KSTP CONSTRUCT. FUND	833.20
1-05-01	CASH -08 MCHANVILLE LID	545.62
	<b>TOTAL CASH</b>	<b>91,031.69</b>
TAXES RECEIVABLE		
1-06-00	TAXES RECEIVABLE - CURRENT	267,454.06
1-07-00	TAXES RECEIVABLE - DELINQUENT	2,166.65
1-08-00	TAXES RECEIVABLE - ESTIMATE	476,205.06
1-09-00	TAXES RECEIVABLE-CURRENT-BOND	183,864.87
1-10-00	TAXES REC DELIQUENT-BOND	1,510.79
1-11-00	TAXES RECEIVABLE-ESTIMATE/BOND	327,545.10
	<b>TOTAL TAXES RECEIVABLE</b>	<b>1,258,746.53</b>
ACCOUNTS RECEIVABLE		
1-15-00	ACCOUNTS RECEIVABLE - OTHER	639.98
1-16-00	ACCOUNTS RECEIVABLE METERED LO	13,342.32
1-17-00	ACCOUNTS RECEIVABLE W/S TRADE	412,117.05
	<b>TOTAL ACCOUNTS RECEIVABLE</b>	<b>426,099.35</b>
1-41-00	INVENTORY OF SUPPLIES	47,061.37
1-48-00	INVESTMENTS -07 BOND REPAY FND	209,364.72
1-50-00	INVESTMENTS - GENERAL FUND	3,502,990.75
1-51-00	INVESTMENTS - CAP RESERVE FUND	99,323.66
1-52-00	SEWER REPLACEMENT/REPAIR FUND	415,354.83
1-53-00	INVESTMENTS -04 BOND REPAY FND	627,496.15
1-54-00	INVESTMENTS -04 KSTP CONST FND	1,670.23
1-54-01	INVESTMENTS -08 MCHANVILLE LID	318,199.36
1-55-00	PREPAID EXPENSES	12,612.98
	<b>TOTAL</b>	<b>5,234,074.03</b>
	<b>TOTAL CURRENT ASSETS</b>	<b>7,009,951.60</b>

SUN VALLEY WATER & SEWER DIST  
BALANCE SHEET  
MAY 31, 2019

<b>FIXED ASSETS</b>		
<b>PROPERTY PLANT &amp; EQUIPMENT</b>		
1-61-00	FIXED ASSETS - LAND	668,769.88
1-62-00	FIXED ASSETS - BUILDINGS	501,922.59
1-63-00	FIXED ASSETS-IMPR NOT BLDG WTR	17,063,535.23
1-64-00	FIXED ASSETS-IMPR NOT BLDG SEW	4,047,330.44
1-65-00	FIXED ASSETS - MACH/EQ - WATER	395,408.52
1-66-00	FIXED ASSETS - MACH/EQ - SEWER	280,427.32
1-67-00	FIXED ASSETS - OFFICE EQUIPMNT	113,847.47
1-68-00	FIXED ASSETS - W.I.P. - WATER	295,950.00
1-69-00	FIXED ASSETS - W.I.P. - SEWER	1,445,239.03
1-69-50	FIXED ASSETS - REUSE	4,613,070.63
	<b>TOTAL PROPERTY PLANT &amp; EQUIPMENT</b>	<b>29,425,499.11</b>
<b>ACCUM DEPRECIATION</b>		
1-72-00	DEPRECIATION - BUILDINGS	( 495,317.86)
1-73-00	DEPR - IMPR NOT BLDG - WATER	( 7,608,424.18)
1-74-00	DEPR - IMPR NOT BLDG - SEWER	( 2,204,888.19)
1-75-00	DEPR - MACH/EQUIP - WATER	( 360,859.03)
1-76-00	DEPR - MACH/EQUIP - SEWER	( 277,318.29)
1-77-00	DEPR - OFFICE EQUIPMENT	( 112,703.68)
1-78-00	DEPR - REUSE	( 514,918.57)
	<b>TOTAL ACCUM DEPRECIATION</b>	<b>( 11,574,429.80)</b>
<b>DEFERRED CHARGES</b>		
1-96-00	CONTRIBUTION - KSTP (ASSET)	11,882,881.63
1-97-00	ACCUMULATED AMORTIZATION KSTP	( 7,181,135.57)
1-99-00	DOF OF RES.-PENSION OBLIGATION	46,822.00
	<b>TOTAL DEFERRED CHARGES</b>	<b>4,748,568.06</b>
	<b>TOTAL FIXED ASSETS</b>	<b>22,599,637.37</b>
	<b>TOTAL ASSETS</b>	<b>29,609,588.97</b>

SUN VALLEY WATER & SEWER DIST  
BALANCE SHEET  
MAY 31, 2019

LIABILITIES AND EQUITY

LIABILITIES

CURRENT LIABILITIES

2-01-00	ACCOUNTS PAYABLE	181,211.19
2-11-00	CURRENT PORTION LONG TERM DEBT	528,219.94
2-12-00	ACCR INT PAYABLE ON BONDS	14,872.21
2-16-00	SALARIES PAYABLE	4,588.79
2-21-00	INS - PAYROLL DEDUCT PAYABLE	5,792.76
2-24-00	DEF COMP - PAYROLL TAXES PAY	103,464.32
	<b>TOTAL CURRENT LIABILITIES</b>	<b>838,149.21</b>

LONG TERM LIABILITIES

2-33-00	BONDS PAYABLE-SERIES 2013	295,000.00
2-33-01	BOND PREMIUM-SERIES 2013	15,762.49
2-38-00	2009 MCHANVILLE LTD PRINCIPAL	76,356.79
2-39-00	BONDS CURRENT PORTION	( 528,219.94)
2-40-00	2018 BONDS	2,112,650.00
	<b>TOTAL LONG TERM LIABILITIES</b>	<b>1,971,549.34</b>

TOTAL LIABILITIES

2,809,698.55

FUND EQUITY

2-63-00	CONTRIBUTIONS FROM DEVELOPERS	4,770,492.56
2-65-00	NET PENSION LIABILITY	158,901.00
2-68-00	DIF OF RES-EMPLOYER PENS ASSUM	29,656.00
2-69-00	DEFERRED INFLOW - TAXES	1,608,658.00
2-73-00	RETAINED EARNINGS - RESERVED	1,324,818.74

2-72-00	UNAPPROPRIATED FUND BALANCE	18,117,756.74
	RETAINED EARNINGS - UNRESERVED	789,807.38

BALANCE - CURRENT DATE

18,907,364.12

TOTAL FUND EQUITY

26,799,890.42

TOTAL LIABILITIES AND EQUITY

29,609,588.97

SUN VALLEY WATER & SEWER DIST  
REVENUES WITH COMPARISON TO BUDGET  
FOR THE 6 MONTHS ENDING MAY 31, 2019

	PERIOD ACTUAL	YTD ACTUAL	BUDGET	UNEARNED	PCNT
<b>WATER AND SEWER REVENUE</b>					
<b>OPERATING REVENUES</b>					
3-38-00	77,658.51	353,682.04	349,920.00	( 3,762.04)	101.1
3-39-00	90,401.74	184,607.05	460,000.00	275,392.95	40.1
3-40-00	87,881.68	369,649.81	344,440.00	( 25,209.81)	107.3
3-41-00	102,956.70	209,852.60	449,000.00	239,147.40	46.7
3-42-00	21,301.28	22,561.00	290,000.00	267,439.00	7.8
3-43-00	37,384.69	38,241.74	550,000.00	511,758.26	7.0
3-45-00	75.00	150.00	750.00	600.00	20.0
3-46-00	75.00	150.00	750.00	600.00	20.0
<b>TOTAL OPERATING REVENUES</b>	<b>417,734.60</b>	<b>1,178,894.24</b>	<b>2,444,860.00</b>	<b>1,265,965.76</b>	<b>48.2</b>
<b>NON-OPERATING REVENUES</b>					
3-01-00	79,367.51	476,205.06	953,244.00	477,038.94	50.0
3-02-00	54,590.85	327,545.10	655,414.00	327,868.90	50.0
3-19-00	30.74	1,130.06	3,000.00	1,869.94	37.7
3-34-00	13,744.83	29,077.66	33,050.00	3,972.34	88.0
3-47-00	3,000.00	6,000.00	30,000.00	24,000.00	20.0
3-69-00	.00	28,496.81	10,000.00	( 16,496.81)	285.0
3-71-00	8,875.11	50,726.36	35,000.00	( 15,726.36)	144.9
3-72-00	209.68	1,211.28	1,000.00	( 211.28)	121.1
3-73-00	.00	.00	5,000.00	5,000.00	.0
3-74-00	1,299.75	5,582.33	50.00	( 5,532.33)	11164.
3-75-00	3.54	814.33	.00	( 814.33)	.0
3-76-00	416.34	1,712.07	50.00	( 1,662.07)	3424.1
3-78-00	671.51	3,881.82	100.00	( 3,781.82)	3881.8
3-90-00	.00	9,259.33	16,180.00	6,920.67	57.2
<b>TOTAL NON-OPERATING REVENUES</b>	<b>162,209.78</b>	<b>939,642.21</b>	<b>1,742,088.00</b>	<b>802,445.79</b>	<b>53.9</b>
<b>TOTAL REVENUE</b>	<b>579,944.36</b>	<b>2,118,536.45</b>	<b>4,186,948.00</b>	<b>2,068,411.55</b>	<b>50.6</b>

SUN VALLEY WATER & SEWER DIST  
EXPENDITURES WITH COMPARISON TO BUDGET  
FOR THE 6 MONTHS ENDING MAY 31, 2019

	PERIOD ACTUAL	YTD ACTUAL	BUDGET	UNEXPENDED	PCNT
<b>WATER AND SEWER EXPENSE</b>					
<b>SALARIES &amp; RELATED EXPENSES</b>					
4-01-11 SALARIES - BOARD	.00	3,800.00	8,000.00	4,200.00	47.5
4-01-12 SALARIES - ADMINISTRATION	12,545.26	82,130.65	248,000.00	165,869.35	33.1
4-01-13 SALARIES - OPERATING	24,595.06	148,208.22	291,000.00	142,791.78	50.9
4-01-21 FICA EXPENSE	2,841.22	17,913.35	40,365.00	22,451.65	44.4
4-01-22 HEALTH INSURANCE EXPENSE	9,590.70	55,714.88	138,060.00	82,345.12	40.4
4-01-23 RETIREMENT EXPENSE	4,204.27	26,334.68	63,350.00	37,015.32	41.6
4-01-24 WORKERS' COMPENSATION EXPENSE	.00	7,444.00	9,360.00	1,916.00	79.5
<b>TOTAL SALARIES &amp; RELATED EXP</b>	<b>53,776.51</b>	<b>341,545.78</b>	<b>798,135.00</b>	<b>456,589.22</b>	<b>42.8</b>
<b>SUPPLIES</b>					
4-02-31 OFFICE SUPPLIES	83.66	5,598.70	9,000.00	3,401.30	62.2
4-02-32 OPERATING SUPPLIES	1,583.19	2,747.01	10,000.00	7,252.99	27.5
4-02-34 MINOR EQUIPMENT	.00	116.43	2,500.00	2,383.57	4.7
4-02-35 FUEL AND OIL	854.46	4,344.41	14,625.00	10,280.59	29.7
4-02-38 JANITORIAL SUPPLIES	45.52	231.46	1,000.00	768.54	23.2
<b>TOTAL SUPPLIES</b>	<b>2,566.83</b>	<b>13,038.01</b>	<b>37,125.00</b>	<b>24,086.99</b>	<b>35.1</b>
<b>OTHER EXPENSES</b>					
4-03-40 KSTP OPERATIONS	32,221.03	217,246.45	709,000.00	491,753.55	30.6
4-03-41 CONSULTING - PROF FEES	2,789.96	21,687.90	40,000.00	18,312.10	54.2
4-03-42 AUDITING - PROF FEES	19,362.00	26,077.00	8,000.00	18,077.00	326.0
4-03-43 ATTORNEY'S FEES	.00	28,980.00	90,000.00	61,020.00	32.2
4-03-44 ADVERTISING & LEGAL PUBLISH	.00	.00	1,000.00	1,000.00	.0
4-03-45 BOND FEES	.00	.00	1,500.00	1,500.00	.0
4-03-46 INSURANCE	3,153.25	18,919.50	39,780.00	20,860.50	47.6
4-03-47 TRAVEL, MEETING, ENTERTAINMENT	91.77	884.94	5,000.00	4,115.06	17.7
4-03-48 DUES, SUBSCRIPTIONS	590.03	13,113.28	20,000.00	6,886.72	65.6
4-03-49 PERSONNEL TRAINING	.00	498.50	6,500.00	6,001.50	7.7
4-03-50 STUDIES	.00	.00	50,000.00	50,000.00	.0
4-03-51 TELEPHONE	1,072.24	6,530.59	9,500.00	2,969.41	68.7
4-03-52 SYSTEM UTILITIES, ELEC/GAS	13,092.10	71,808.00	275,000.00	203,192.00	26.1
4-03-54 RENT - EQUIPMENT OFFICE	232.56	1,746.88	4,000.00	2,253.12	43.7
4-03-57 UTILITIES - MTC BLDG	297.98	3,044.94	5,000.00	1,955.06	60.9
4-03-58 R/M OFFICE EQ	165.00	410.00	1,000.00	590.00	41.0
4-03-59 R/M GROUNDS	1,950.00	4,618.04	22,000.00	17,381.96	21.0
4-03-60 R/M - BUILDINGS	435.11	1,968.76	46,000.00	44,031.24	4.3
4-03-61 R/M - AUTO	89.74	880.58	10,000.00	9,119.42	8.8
4-03-62 R/M - WA EQUIPMENT	.00	.00	3,000.00	3,000.00	.0
4-03-63 R/M - WATER SYSTEM	15,127.14	29,525.14	200,000.00	170,474.86	14.8
4-03-64 R/M - SEWER SYSTEM	9,139.65	12,574.63	70,000.00	57,425.37	18.0
4-03-65 R/M - WATER METERS	.00	124.43	17,000.00	16,875.57	.7
4-03-67 WATER TEST FEES	90.00	641.70	5,000.00	4,358.30	12.8
4-03-69 OTHER EXPENSES	153.13	3,265.95	5,000.00	1,734.05	65.3
4-03-70 R/M - REUSE SYSTEM	479.90	1,392.86	10,000.00	8,607.14	13.9
<b>TOTAL OTHER EXPENSES</b>	<b>100,532.59</b>	<b>465,940.07</b>	<b>1,653,280.00</b>	<b>1,187,339.93</b>	<b>28.2</b>

SUN VALLEY WATER & SEWER DIST  
EXPENDITURES WITH COMPARISON TO BUDGET  
FOR THE 6 MONTHS ENDING MAY 31, 2019

	PERIOD ACTUAL	YTD ACTUAL	BUDGET	UNEXPENDED	PCNT
<b>CAPITAL</b>					
4-04-70 DEPRECIATION EXPENSE	56,025.27	336,151.62	700,000.00	363,848.38	48.0
4-04-73 AMORTIZ OF CONTRIBUTION - KSTP	24,000.73	144,004.38	350,000.00	205,995.62	41.1
<b>TOTAL CAPITAL</b>	<b>80,026.00</b>	<b>480,156.00</b>	<b>1,050,000.00</b>	<b>569,844.00</b>	<b>45.7</b>
<b>DEBT SERVICE</b>					
4-05-81 INTEREST EXPENSE FOR BONDS	.00	18,393.66	108,824.00	90,430.34	16.9
4-05-84 INTEREST EXPENSE- LID	.00	9,855.55	8,220.00	( 1,635.55)	119.9
<b>TOTAL DEBT SERVICE</b>	<b>.00</b>	<b>28,249.21</b>	<b>117,044.00</b>	<b>88,794.79</b>	<b>24.1</b>
<b>TOTAL DEPARTMENT EXPENSE</b>	<b>236,901.93</b>	<b>1,328,929.07</b>	<b>3,655,584.00</b>	<b>2,326,654.93</b>	<b>36.4</b>
<b>NET REVENUE OVER EXPENDITURES</b>	<b>343,042.43</b>	<b>789,607.38</b>	<b>531,364.00</b>	<b>( 258,243.38)</b>	<b>148.6</b>

## Report Criteria:

Detail report type printed

Vendor Number	Name	Invoice Number	Description	Seq	Invoice Date	Invoice Amount	Discount Amount	Check Amount	Check Number	Check Issue Date
50	Atkinson's Market	4746057	JANITORIAL SUPPLIES-A	1	04/16/2019	13.07	.00	13.07	15596	05/20/2019
		4748667	OP SUP/SALT-APR	1	04/22/2019	214.26	.00	214.26	15596	05/20/2019
Total 50:						227.33	.00	227.33		
70	Banyan Technology Inc.	20573	OFC SUPP - ADOBE ACR	1	04/30/2019	559.00	.00	559.00	15597	05/20/2019
		20573	REUSE R/M - RE-USE LIF	2	04/30/2019	725.46	.00	725.46	15597	05/20/2019
		20573	H2O R/M - ANNUAL SERVI	3	04/30/2019	6,940.00	.00	6,940.00	15597	05/20/2019
Total 70:						8,224.46	.00	8,224.46		
126	BOISE OFFICE EQUIPME	IN1982793	OFC EQUIP R/M - Z DRIV	1	04/29/2019	95.00	.00	95.00	15598	05/20/2019
Total 126:						95.00	.00	95.00		
170	Business As Usual	146354	OFFICE SUPPLIES/APR -	1	04/08/2019	81.78	.00	81.78	15627	05/20/2019
Total 170:						81.78	.00	81.78		
175	CASELLE INC.	40449	CONTRACT SUPPORT-C	1	04/19/2019	300.00	.00	300.00	5171901	05/20/2019
		94852	CONTRACT SUPPORT-5/	1	05/01/2019	611.00	.00	611.00	5171901	05/20/2019
Total 175:						311.00	.00	311.00		
180	CH2M Hill INC.	154047	EQUIVILENT CONNECTIO	1	04/09/2019	6,335.10	.00	6,335.10	15599	05/20/2019
		154047CH00	ADMIN GENERAL CONSU	1	05/15/2019	18,082.27	.00	18,082.27	15599	05/20/2019
Total 180:						24,417.37	.00	24,417.37		
185	Chateau Drug	2051336	OFFICE SUPPLIES - CAL	1	04/16/2019	4.99	.00	4.99	15600	05/20/2019
		2055145	OFFICE SUPPLIES THUM	1	04/29/2019	54.98	.00	54.98	15600	05/20/2019
Total 185:						59.97	.00	59.97		
190	Clear Creek Disposal	0001226155	ON CALL SVC 4/15,23,25/	1	04/26/2019	125.43	.00	125.43	15601	05/20/2019
Total 190:						125.43	.00	125.43		
205	Color Haus	218519	BUILDING R/M-PAINTERS	1	04/22/2019	34.78	.00	34.78	15602	05/20/2019
		218677	OP SUP- 2 LARGE GLOV	1	04/25/2019	9.98	.00	9.98	15602	05/20/2019
		218677	BUILDING R/M-RUSTOLE	2	04/25/2019	23.38	.00	23.38	15602	05/20/2019
		218744	BUILDING R/M-LRN RUST	1	04/26/2019	15.20	.00	15.20	15602	05/20/2019
		218882	OP SUP- 1-L GLOVES/EA	1	04/30/2019	19.93	.00	19.93	15602	05/20/2019
Total 205:						103.27	.00	103.27		
220	COX BUSINESS SERVICE	051419	INTERNET SERVICE-MAY	1	05/14/2019	89.00	.00	89.00	15629	05/24/2019
Total 220:						89.00	.00	89.00		
245	Davis Embroidery	33033	OP SUP-2 JACKET-JP &	1	03/06/2019	117.96	.00	117.96	15603	05/20/2019
Total 245:						117.96	.00	117.96		

Vendor Number	Name	Invoice Number	Description	Seq	Invoice Date	Invoice Amount	Discount Amount	Check Amount	Check Number	Check Issue Date
270	Dig Line Inc	0060482-IN	DUES & SUBSCRIPTIONS	1	04/30/2019	213.72	.00	213.72	15604	05/20/2019
Total 270:						213.72	.00	213.72		
365	Houston Lumber Co.	014-147498	BLDG R/M - JIGSAW BLA	1	03/28/2019	20.87	.00	20.87	15607	05/20/2019
		014-148462	OP SUP-CONCRETE EPO	1	04/01/2019	33.00	.00	33.00	15607	05/20/2019
Total 365:						53.87	.00	53.87		
390	Hunter Landscape, Inc.	8312	GRNDS R/M-SPRING CLE	1	05/05/2019	1,980.00	.00	1,980.00	15608	05/20/2019
		8312	GRNDS R/M-ARBOR CAR	2	05/05/2019	620.00	.00	620.00	15608	05/20/2019
Total 390:						2,600.00	.00	2,600.00		
430	Idaho Power	052819	SYSTEM UTILITIES-WHIT	1	05/28/2019	639.43	.00	639.43	6101901	06/10/2019
		052819	SYSTEM UTILITIES-BACK	2	05/28/2019	9.08	.00	9.08	6101901	06/10/2019
		052819	SYSTEM UTILITIES-LOT 1	3	05/28/2019	5.29	.00	5.29	6101901	06/10/2019
		052819	SYSTEM UTILITIES-SAGE	4	05/28/2019	269.63	.00	269.63	6101901	06/10/2019
		052819	SYSTEM UTILITIES-WELL	5	05/28/2019	1,541.72	.00	1,541.72	6101901	06/10/2019
		052819	SYSTEM UTILITIES-SAGE	6	05/28/2019	8.30	.00	8.30	6101901	06/10/2019
		052819	SYSTEM UTILITIES-SKYL	7	05/28/2019	9.30	.00	9.30	6101901	06/10/2019
		052819	SYSTEM UTILITIES-ELKH	8	05/28/2019	26.79	.00	26.79	6101901	06/10/2019
		052819	SYSTEM UTILITIES-REUS	9	05/28/2019	1,836.39	.00	1,836.39	6101901	06/10/2019
		052819	SYSTEM UTILITIES-WELL	10	05/28/2019	356.56	.00	356.56	6101901	06/10/2019
		052819	SYSTEM UTILITIES-WELL	11	05/28/2019	3,443.51	.00	3,443.51	6101901	06/10/2019
		052819	SYSTEM UTILITIES-WELL	12	05/28/2019	781.92	.00	781.92	6101901	06/10/2019
		052819	SYSTEM UTILITIES-WELL	13	05/28/2019	128.65	.00	128.65	6101901	06/10/2019
		052819	SYSTEM UTILITIES-MCH	14	05/28/2019	111.90	.00	111.90	6101901	06/10/2019
		052819	SYSTEM UTILITIES-ST LU	15	05/28/2019	186.41	.00	186.41	6101901	06/10/2019
		052819	SYSTEM UTILITIES-LANE	16	05/28/2019	50.86	.00	50.86	6101901	06/10/2019
		052819	SYSTEM UTILITIES-WELL	17	05/28/2019	766.77	.00	766.77	6101901	06/10/2019
		052819	SYSTEM UTILITIES-DOLL	18	05/28/2019	8.30	.00	8.30	6101901	06/10/2019
		052819	SYSTEM UTILITIES-WHIT	19	05/28/2019	7.75	.00	7.75	6101901	06/10/2019
		052819	SYSTEM UTILITIES-SKYL	20	05/28/2019	57.96	.00	57.96	6101901	06/10/2019
		052819	SYSTEM UTILITIES-DOLL	21	05/28/2019	397.12	.00	397.12	6101901	06/10/2019
		052819	SYSTEM UTILITIES-HEAD	22	05/28/2019	252.29	.00	252.29	6101901	06/10/2019
		052819	SYSTEM UTILITIES-SUN	23	05/28/2019	39.55	.00	39.55	6101901	06/10/2019
		052819	SYSTEM UTILITIES-SAGE	24	05/28/2019	830.54	.00	830.54	6101901	06/10/2019
		052819	SYSTEM UTILITIES-WELL	25	05/28/2019	501.55	.00	501.55	6101901	06/10/2019
		052819	SYSTEM UTILITIES-WELL	26	05/28/2019	129.10	.00	129.10	6101901	06/10/2019
		052819	SYSTEM UTILITIES-WELL	27	05/28/2019	542.04	.00	542.04	6101901	06/10/2019
		052819	SYSTEM UTILITIES-WELL	28	05/28/2019	11.59	.00	11.59	6101901	06/10/2019
		052819	SYSTEM UTILITIES-WELL	29	05/28/2019	86.70	.00	86.70	6101901	06/10/2019
		052819	SYSTEM UTILITIES-WELL	30	05/28/2019	71.70	.00	71.70	6101901	06/10/2019
		052819	SYSTEM UTILITIES-BACK	31	05/28/2019	37.93	.00	37.93	6101901	06/10/2019
		052819	SYSTEM UTILITIES-SUN	32	05/28/2019	6.89	.00	6.89	6101901	06/10/2019
Total 430:						13,153.52	.00	13,153.52		
460	Intermountain Gas Co	052419	SYSTEM UTILITIES-WELL	1	05/24/2019	18.23	.00	18.23	15634	05/31/2019
		052419	SYSTEM UTILITIES-SAGE	2	05/24/2019	9.79	.00	9.79	15634	05/31/2019
		052419	SYSTEM UTILITIES - 49 L	3	05/24/2019	45.69	.00	45.69	15634	05/31/2019
		052419	SYSTEM UTILITIES-WHIT	4	05/24/2019	17.71	.00	17.71	15634	05/31/2019
		052419	SYSTEM UTILITIES-WELL	5	05/24/2019	10.53	.00	10.53	15634	05/31/2019
		052419	SYSTEM UTILITIES-WELL	6	05/24/2019	18.77	.00	18.77	15634	05/31/2019
		052419	SYSTEM UTILITIES-MCH	7	05/24/2019	10.53	.00	10.53	15634	05/31/2019
		052419	SYSTEM UTILITIES-LANE	8	05/24/2019	11.90	.00	11.90	15634	05/31/2019

Vendor Number	Name	Invoice Number	Description	Seq	Invoice Date	Invoice Amount	Discount Amount	Check Amount	Check Number	Check Issue Date
		052419	SYSTEM UTILITIES - REU	9	05/24/2019	9.79	.00	9.79	15634	05/31/2019
	Total 460:					152.94	.00	152.94		
490	Joe's Backhoe Service, Inc	234829	REUSE R/M - LR NORTH -	1	04/25/2019	187.50	.00	187.50	15611	05/20/2019
	Total 490:					187.50	.00	187.50		
515	Ketchum, City of	043019	HEADWORKS PROJECT-	1	04/30/2019	114,445.97	.00	114,445.97	15612	05/20/2019
		043019	KSTP OPERATINGS/APRI	2	04/30/2019	52,501.65	.00	52,501.65	15612	05/20/2019
	Total 515:					166,947.62	.00	166,947.62		
575	Magic Valley Labs, Inc	11929	H2O TEST FEES/APR	1	04/30/2019	90.00	.00	90.00	15613	05/20/2019
	Total 575:					90.00	.00	90.00		
582	MAHLKE HUNSAKER & C	1-2245	2017-18 ANNUAL AUDIT	1	05/01/2019	630.00	.00	630.00	15614	05/20/2019
	Total 582:					630.00	.00	630.00		
624	H.D. FOWLER COMPANY	15113697	INVENTORY OF SUPPLIE	1	04/16/2019	645.58	.00	645.58	15606	05/20/2019
		15113710	OP SUPP - TAPE MEASU	1	04/16/2019	34.68	.00	34.68	15606	05/20/2019
	Total 624:					680.26	.00	680.26		
636	NEUNER, ANDY	040419	HEALTH INSURE EXP-AN	1	04/04/2019	93.94	.00	93.94	15617	05/20/2019
		041019 AN	HEALTH INSURE EXP-AN	1	04/10/2019	119.94	.00	119.94	15617	05/20/2019
		041719AN	HEALTH INSURE EXP-AN	1	04/17/2019	89.63	.00	89.63	15617	05/20/2019
		042419AN	HEALTH INSURE EXP-AN	1	04/24/2019	74.82	.00	74.82	15617	05/20/2019
	Total 636:					378.33	.00	378.33		
670	Pipeco Inc	S3296643.00	H2O R/M-DUMKE VAULT	1	04/10/2019	300.69	.00	300.69	15618	05/20/2019
		S3304668.00	H2O R/M-DUMKE VAULT	1	04/18/2019	87.16	.00	87.16	15618	05/20/2019
		S3320261.00	SMALL TOOLS - SHOVEL	1	04/29/2019	40.87	.00	40.87	15618	05/20/2019
		S3320261.00	OP SUP-PIPEWRAP TAPE	2	04/29/2019	26.98	.00	26.98	15618	05/20/2019
		S3320264.00	BLDG R/M - LANE RANCH	1	04/29/2019	6.47	.00	6.47	15618	05/20/2019
	Total 670:					462.17	.00	462.17		
677	PLATT ELECTRIC SUPPL	U926100	H2O R/M - DUMKE VAULT	1	04/16/2019	8.53	.00	8.53	15619	05/20/2019
		U933934	METER R/M - SEALING L	1	04/18/2019	124.43	.00	124.43	15619	05/20/2019
	Total 677:					132.96	.00	132.96		
735	River Run Auto Parts	6538-140086	AUTO R/M- AN CQ FILTE	1	04/04/2019	17.25	.00	17.25	15620	05/20/2019
		6538-140579	BLDG R/M - OIL FOR GEN	1	04/22/2019	9.98	.00	9.98	15620	05/20/2019
	Total 735:					27.23	.00	27.23		
741	J. EVAN ROBERTSON P.A	10985	ATTORNEY'S FEES - MAR	1	03/31/2019	4,655.00	.00	4,655.00	15610	05/20/2019
		11026	ATTORNEY'S FEES - APR	1	04/30/2019	8,085.00	.00	8,085.00	15610	05/20/2019
	Total 741:					12,740.00	.00	12,740.00		
745	MARCO ROMERO COMP	35235	OFFICE EQUIP R/M- NET	1	05/01/2019	165.00	.00	165.00	15615	05/20/2019

Vendor Number	Name	Invoice Number	Description	Seq	Invoice Date	Invoice Amount	Discount Amount	Check Amount	Check Number	Check Issue Date
Total 745:						165.00	.00	165.00		
795	SILVER CREEK SUPPLY	S1977334.00	H2O R/M-WELL #11	1	04/24/2019	144.05	.00	144.05	15621	05/20/2019
Total 795:						144.05	.00	144.05		
816	STANDARD PLUMBING S	JMMG63	H2O R/M-SAGECREEK B	1	04/23/2019	85.33	.00	85.33	15622	05/20/2019
		JMNC74	H2O R/M-SAGECREEK B	1	04/24/2019	23.78	.00	23.78	15622	05/20/2019
Total 816:						109.11	.00	109.11		
820	State Insurance Fund	040119	WORKMANS COMP 4/1/1	1	04/01/2019	7,444.00	.00	7,444.00	15623	05/20/2019
Total 820:						7,444.00	.00	7,444.00		
915	United Oil	908851	GAS & OIL EXPENSE-TH	1	04/15/2019	570.14	.00	570.14	15624	05/20/2019
		910014	GAS & OIL EXPENSE-TH	1	04/30/2019	370.77	.00	370.77	15624	05/20/2019
Total 915:						940.91	.00	940.91		
935	USA Blue Book	858716	H2O R/M- CHLORINE PAR	1	04/04/2019	109.72	.00	109.72	15625	05/20/2019
Total 935:						109.72	.00	109.72		
975	Verizon Wireless	9830576742	CELL PHONES-APR 22-M	1	05/21/2019	191.36	.00	191.36	15635	05/31/2019
Total 975:						191.36	.00	191.36		
1022	WELLS FARGO FINANCIA	5006281955	COPIER LEASE- 5/5/19-6/	1	05/09/2019	232.56	.00	232.56	15631	05/24/2019
Total 1022:						232.56	.00	232.56		
1035	Wells Fargo Payment Remi	051319	DUES/SUBSCRIPTIONS	1	05/13/2019	3.99	.00	3.99	15632	05/24/2019
		051319	BLDG R/M - AIR DELIGHT	2	05/13/2019	329.51	.00	329.51	15632	05/24/2019
		051319	TM&E-STARBUCKS PM&	3	05/13/2019	91.77	.00	91.77	15632	05/24/2019
		051319	OFC SUPP-THNDRPAWS	4	05/13/2019	17.26	.00	17.26	15632	05/24/2019
		051319	NORTHERN TOOL - CAST	5	05/13/2019	341.47	.00	341.47	15632	05/24/2019
		051319	OP SUPP-D&B'S - PM WO	6	05/13/2019	82.02	.00	82.02	15632	05/24/2019
Total 1035:						866.02	.00	866.02		
1098	FARMER BROTHERS CO	1563357	OFC SUPP - CASE OF CO	1	04/25/2019	92.95	.00	92.95	15605	05/20/2019
Total 1098:						92.95	.00	92.95		
1101	INTEGRITY INSPECTION	FY19M5-245	SEWER R/M - MANHOLE I	1	05/03/2019	4,450.00	.00	4,450.00	15609	05/20/2019
Total 1101:						4,450.00	.00	4,450.00		
1105	MCKENZIE, MELISSA	042219 JM	MED 4/22/19 - JM	1	04/22/2019	98.22	.00	98.22	15616	05/20/2019
		050619 JM	HEALTH INS EXP - JM	1	05/06/2019	116.60	.00	116.60	15616	05/20/2019
Total 1105:						214.82	.00	214.82		
1106	WENDY KIRKPATRICK	043019	CONSULT - APRIL 2019	1	04/30/2019	993.75	.00	993.75	15626	05/20/2019

Vendor Number	Name	Invoice Number	Description	Seq	Invoice Date	Invoice Amount	Discount Amount	Check Amount	Check Number	Check Issue Date
<b>Total 1106:</b>						993.75	.00	993.75		
1108	EideBallyy LLP	E100817496	2018 ANNUAL AUDIT - PR	1	04/24/2019	11,337.00	.00	11,337.00	15630	05/24/2019
<b>Total 1108:</b>						11,337.00	.00	11,337.00		
<b>Grand Totals:</b>						259,593.94	.00	259,593.94		

Report Criteria:  
Detail report type printed

## Report Criteria:

Detail report.

Invoices with totals above \$5000.00 included.

Only unpaid invoices included.

Vendor Name = (NOT LIKE) "IDAHO POWER","INTERMOUNTAIN GAS","CASELLE INC.,""CENTURY LINK","COX BUSINESS SERVICES","IDAHO DEQ","Verizon Wireless","WELLS FARGO FINANCIAL LEASING","Wells Fargo Payment Remittance Ctr","AA TANKS CO"

GL Acct No	Vendor Name	Description	Net Invoice Amount
<b>180</b>			
1-68-00	FIXED ASSETS - W.I.P. - WATER		
	CH2M Hill INC.	WELL#13 PROOF OF BENEFICIAL USE APP	6,777.17
	Total 180:		6,777.17
<b>286</b>			
4-03-63	R/M - WATER SYSTEM		
	EGGERS ASSOCIATES P.A.	WATER R/M LRN WATER TOWER PLANTING	10,895.00
	Total 286:		10,895.00
<b>315</b>			
1-68-00	FIXED ASSETS - W.I.P. - WATER		
	G C Systems Inc	WELL 3 - PUMP CONTROL VALVE	8,700.00
	Total 315:		8,700.00
<b>515</b>			
1-69-00	FIXED ASSETS - W.I.P. - SEWER		
	Ketchum, City of	KSTP OPERATINGS/MAY 2019	90,919.14
4-03-40	KSTP OPERATIONS		
	Ketchum, City of	KSTP OPERATINGS/MAY 2019	32,221.03
	Total 515:		123,140.17
<b>1108</b>			
4-03-42	AUDITING - PROF FEES		
	EideBailly LLP	FINAL BILL FOR 2017-2018 AUDIT	7,395.00
	Total 1108:		7,395.00
	Grand Totals:		156,907.34

Report Criteria:

Deposit date: 5/16/2019  
ACH file created: C:\Users\Joanne\Desktop\PAYROLL DIRECT DEPOSIT\ACHFILES1619.ach  
Organization's offset record not included  
Ordered by employee number

Employee Number	Name	Routing Number	Account Number	Type	Amount	Net Amount	Prenotice
3	Anderson, Anthony F.	123103729	153395134486	Checking Deposit	1,712.13	1,712.13	
4	Benson, Christopher N.	325070980	3087013409	Checking Deposit	1,587.33	1,587.33	
5	Neuner, Andrew J.	124103799	2323774337	Checking Deposit	1,542.64	1,542.64	
6	Springer, Daniel S.	124103582	918120041	Checking Deposit	2,339.18	2,339.18	
7	McMahon, Patrick J.	123103729	153354009554	Checking Deposit	2,629.07	2,629.07	
46	Parker, Jeanene	324173383	1400002058159	Checking Deposit	265.00	.00	
46	Parker, Jeanene	324173383	1010002058159	Savings Deposit	25.00	.00	
46	Parker, Jeanene	123171955	0813200018304	Checking Deposit	1,258.39	1,548.39	
47	McKenzie, Melissa S.	123103729	153353933200	Checking Deposit	1,326.74	1,326.74	
Total:						12,685.48-	

Transaction count: 9  
Debit total: .00  
Credit total: 12,685.48-

13568334  
APPROVED *[Signature]*  
PAID *[Signature]*

Report Criteria:

Deposit date: 5/30/2019  
ACH file created: C:\Users\Joanne\Desktop\PAYROLL DIRECT DEPOSIT\ACHFILE53019.ach  
Organization's offset record not included  
Ordered by employee number

Employee Number	Name	Routing Number	Account Number	Type	Amount	Net Amount	Prenotice
3	Anderson, Anthony F.	123103729	153395134486	Checking Deposit	1,859.75	1,859.75	
4	Benson, Christopher N.	325070980	3087013409	Checking Deposit	1,832.36	1,832.36	
5	Neuner, Andrew J.	124103799	2323774337	Checking Deposit	1,497.57	1,497.57	
6	Springer, Daniel S.	124103582	918120041	Checking Deposit	2,031.67	2,031.67	
7	McMahon, Patrick J.	123103729	153354009554	Checking Deposit	2,629.07	2,629.07	
46	Parker, Jeanene	324173383	1400002058159	Checking Deposit	265.00	.00	
46	Parker, Jeanene	324173383	1010002058159	Savings Deposit	25.00	.00	
46	Parker, Jeanene	123171955	0813200018304	Checking Deposit	1,258.39	1,548.39	
47	McKenzie, Melissa S.	123103729	153353933200	Checking Deposit	1,660.53	1,660.53	
Total:						13,059.34-	

Transaction count: 9  
Debit total: .00  
Credit total: 13,059.34-

13719257  
APPROVED *JK*  
PAID \_\_\_\_\_



Prepared For	SUN VALLEY WATER PJ MCMAHON
Account Number	[REDACTED]
Statement Closing Date	05/13/19
Days in Billing Cycle	31
Next Statement Date	06/12/19

For 24-Hour Customer Service Call:  
800-225-5935

Inquiries or Questions:  
Wells Fargo SBL PO Box 29482  
Phoenix, AZ 85038-8650

Payments:  
Payment Remittance Center PO Box 77033  
Minneapolis, MN 55480-7733

Credit Line	\$9,000
Available Credit	\$8,102

**Payment Information**

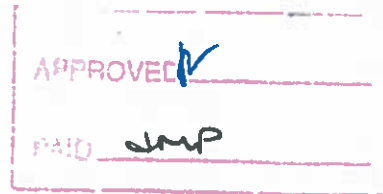
New Balance	\$897.01
Current Payment Due (Minimum Payment)	\$25.00
Current Payment Due Date	06/07/19

If you wish to pay off your balance in full: The balance noted on your statement is not the payoff amount. Please call 800-225-5935 for payoff information.

**Account Summary**

Previous Balance	\$71.36
Credits	\$0.00
Payments	\$71.36
Purchases & Other Charges	\$897.01
Cash Advances	\$0.00
Finance Charges	\$0.00
New Balance	\$897.01

866.02



**Rate Information**

TYPE OF BALANCE	DESCRIPTION	AMOUNT	TOTAL CHARGES
	4.03.48 DUES/SUBS 3.99 PANDORA		
	4.03.60 BLDG R/M 329.51 AIR DELIGHTS-URINAL FLUSHER/AMAZON - AIR COMPRESSOR		
	4.03.47 TME 91.77 STARBUCKS EVAN P/M,STAGECOACH PM/WISKUS,LACAB AN/CB CREW LUNCH		
	4.02.31 OFC SUPP 17.26 THUNDRPAWS-AVIAN SUICIDE PREVENTION		
PURCHASES	4.03.63 WATER R/M 341.47 NORTHERN TOOL-CAST IRON SUMP W/FL		\$0.00
CASH ADVANCES	4.02.32 OP SUPP 82.02 PM -WORK CLOTHES		\$0.00
TOTAL	866.02		\$0.00

30.99 FED EX - DISPUTE - NOT DISTRICTS

**Transaction Details**

Trans	Post	Reference Number	Description	Credits	Charges
04 12	04 13	2459216362X802752	NOR*NORTHERN TOOL 800-222-5331 MN - Cast Iron Sump w/FL 4.03.63		341.47
04 15	04 15	241640739MJ7T6BPH	FEDEX 475476128 600-4633339 TN - DISPUTE		30.99
04 15	04 15	2443106392DYMMAND	AMAZON COM*MZ7A25NMO AMZN AMZN COM BILL WA - Air Compressor - Fire Suppression		184.51 4.02.31
04 15	04 15	24717053A7K430RQR	STARBUCKS KETCHUM ID 4.03.47 - Coffee w/PM/Evan		14.91
04 15	04 16	24013393A022JVTZN	D&B SUPPLY CO STORE 4 TWIN FALLS ID - ofc Supplies - Pants-PM - 4.02.32		82.02
04 19	04 19	24592163D2XFN50K8	PANDORA*INTERNET RADIO PDORA COM BIL CA - Dues/Subscriber. 4.03.48		3.99
04 24	04 24	74856203J25RZE5WX	PAYMENT THANK YOU 71.36		

See reverse side for important information



**Transaction Details**

Trans	Post	Reference Number	Description	Credits	Charges
05 01	05 01	24493983S61KWD7GY	STAGECOACH GARDEN CITY ID - <sup>PM</sup> Lunch with Wiskus - 4-03-47		42 35
05 02	05 02	24425293V0FV8HG0	Thunderpaws Pet Shoppe KETCHUM ID Annon Suicide Prevention - 4-02-31		17 25
05 07	05 07	24717053Z85YGKY4M	A.R DELIGHTS INC 800-4405556 OR - Flusher for funeral 4-03-40		145 00
05 08	05 08	240133940011B5KM7	LA CABANITA MEX.CAN RESTA KETCHUM ID - AN/BB (cash lunch) - 4-03-47		34 51

**Wells Fargo News**

**What can alerts do for your business?\***

Receive timely updates on your business credit card account via email or text. Alerts allow you to control and receive only the messages that are important to you. Sign up for alerts during your Wells Fargo Business Online® session by going to your Business Card account screen and selecting the Manage Alerts menu option.

Not enrolled in Online banking? Enroll today at [wellstargo.com/biz/online-banking](http://wellstargo.com/biz/online-banking)

\*Availability may be affected by your mobile carrier's coverage area. Your mobile carrier's message and data rates may apply.

Sun Valley Water Capital Projects

2019 Fiscal Year	Beginning Balance	Dec	Jan	Feb	Mar	Apr	May	YEAR END	Ending Balance
FROM 11/30/18									
Capital Water Projects	\$63,991.76	\$60,672.75							
2017 Bitteroot Road									
2005 Well #14/Trail Creek	\$168,871.18								
2004 Well #13	\$1,623,580.55	\$5,810.01	2,692.82						
2019 Well #3									
2010 Meter	\$9,204.35								
2010 Meter	\$9,335.17						\$9,335.17		
2010 Meter/CLOSE-REOPEN	\$9,204.35								
White Clouds	\$45,131.80								
PLC UPGRADE	16,565.39	\$1,083.48	\$25,618.99	\$19,472.47					
Auditors JE	1,927,345.03	\$67,566.24	28,311.81	19,472.47	0.00	16,082.27	16,112.34	0.00	2,076,890.16
Total	1,927,345.03	\$67,566.24	28,311.81	19,472.47	0.00	16,082.27	16,112.34	0.00	2,076,890.16
GL Acct 1.68									
2018/19 CUMULATIVE WATER TOTAL	\$67,566.24	\$95,878.05	\$115,350.52	\$115,350.52	\$115,350.52	\$133,432.79	\$149,545.13	\$149,545.13	\$149,545.13
YTD TOTAL FOR 2018/19									
KSTP-ASSETS 1.96	11,800,798.23								11,800,798.23
YTD TOTAL FOR 2018/19									
Capital Sewer Projects	\$921,502.99	\$136,827.20	\$155,142.63	\$83,780.59	\$146,190.40	\$114,445.97	\$90,919.14	\$1,648,808.92	
KSTP-Headworks/Screen Project	\$921,502.99	\$136,827.20	\$155,142.63	\$83,780.59	\$146,190.40	\$114,445.97	\$90,919.14	\$1,648,808.92	
Total	\$921,502.99	\$136,827.20	\$155,142.63	\$83,780.59	\$146,190.40	\$114,445.97	\$90,919.14	\$1,648,808.92	
GL Acct 1.69									
2018/19 CUMULATIVE SEWER TOTAL	\$136,827.20	\$291,969.83	\$375,750.42	\$521,940.82	\$636,386.79	\$727,305.93	\$727,305.93	\$727,305.93	\$727,305.93
Monthly Total	2,848,848.02	204,393.44	183,454.44	103,253.06	146,190.40	132,528.24	107,031.48	0.00	\$3,339,948.96
Cumulative Total	\$204,393.44	\$387,847.88	\$491,100.94	\$637,291.34	\$769,819.56	\$876,851.06			

YTD TOTAL FOR 2018/19





P.O. Box 848 Sumner, WA 98390 (253) 939-8322

# Invoice

Terms: NET 30 DAYS

Date: 6/10/2019

**37980**

**Bill To:**

SUN VALLEY WATER & SEWER DISTRICT  
PO BOX 2410  
SUN VALLEY, ID 83353-

**Ship To:**

SUN VALLEY WATER & SEWER DISTRICT  
ATTN: CHRIS BENSON  
49 LARRY'S LANE  
SUN VALLEY, ID 83353-

PO	Ship Date	FOB Point	Ship Via
WELL 3	6/3/2019	FACTORY	FFA

Qty	Part Number	Description	Price Ea.	Amount
1	60-11-1100B	6" 60A-11BYKC PUMP CONTROL VALVE, DISST, EPOXY LINED & COATED, 150# FLANGED, 120/60 VAC	\$8,700.00	\$8,700.00
			<b>Sub Total: \$8,700.00</b>	

**Comments:**

Freight: \$0.00

Sales Tax: 0.00% \$0.00

**Total Due: \$8,700.00**

1-68-00

APPROVED

DATE

## CH2MHILL Engineering Support Services Summary

April 27, 2019 through May 24, 2019

TO: Patrick McMahon, General Manager

FROM: John Wiskus, P.E.

DATE: June 13, 2019

PROJECT NUMBER: 154047.A0.60

The following is a summary of our activities for the period noted above.

### Admin and General Consulting

Activities include project management and administration; communication/coordination with staff and District Staff; coordination with District for wet signature for the final Well 13 POBU submittal package for IDWR; delivery of final Well 13 POBU submittal package to Dan Nelson/IDWR; coordination with IDWR regarding status of submittal package and review time anticipated by IDWR; receipt and review of initial review comments by IDWR and their request for additional information for inclusion into the Well 13 POBU Submittal Package; review of initial review and coordination of comments by IDWR with the District and development of responses to IDWR's request for additional information; review of the wells and associated water rights for the River Run System; development of an approach to establish the peak hour flows for the River Run System wells on 7-20-03; review of IDAPA Rules referenced by IDWR in their initial review comments; preparation of a summary of the District's reservoirs, reservoir volumes, and peak hour reservoir delivery rates on 7-20-03; a conference call with IDWR to clarify IDWR's concerns regarding the maximum delivery rate of the District's reservoirs during a peak hour event; and initial development of an approach to determine the Total System peak hour demand event in July 2003 and ultimately increase the approved flowrate in the POBU determination for Well 13.



154047CH009  
 Boise, ID 83702  
 Phone No. 208 345-5310  
 FAX No. 208 345-5315

Remit To: CH2M Inc.  
 P.O. BOX 200991  
 Dallas, TX 75320-0991

Sun Valley Water & Sewer District  
 Attention: Pat McMahon, General Manager  
 P.O. Box 2410  
 Sun Valley ID 83353

Date: 14-Jun-19  
 Project No.: 154047  
 Client Ref. No.: 865  
 Invoice No.: 154047CH009

**INVOICE**

For services from April 27, 2019 through May 24, 2019, for Sun Valley Water & Sewer District Engineering Services.

**Professional Services:**

Class/Grade	Employee Name	Hours	Rate	Amount
TC43100	Boggs, Kevin	4.5	\$189.75	\$853.88
PD53300	Wiskus, John E	27.5	\$205.42	\$5,649.05
		<b>32.0</b>		<b>\$6,502.93</b>

**Expenses:**

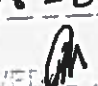
Travel-Car Rental	\$57.94
Travel-Taxi/Tolls/Parking	\$11.50
Travel-Other	\$20.80
Computers	\$184.00
	<b>\$274.24</b>

**AMOUNT DUE FOR CURRENT BILLING**

**\$6,777.17**

DUE AND PAYABLE ON RECEIPT OF INVOICE. FINANCE CHARGES WILL BE ASSESSED AT 1 1/2 PERCENT PER MONTH (OR MAXIMUM PERMISSIBLE UNDER STATE LAW) ON ALL ACCOUNTS OVERDUE UNLESS STATED OTHERWISE IN OUR CONTRACT. CH2MHILL IS INCORPORATED.

1-68-00

APPROVED 

PAID

# FERGUSON®

## WATERWORKS

6715 WEST OVERLAND DRIVE  
IDAHO FALLS, ID 83402-5700

Please contact with Questions: 208-528-7490

12627 1 MB 0.428 E0394X 10578 D4858999076 S2 P6421582 0001:0001



SUN VALLEY WTER & SWER DSTRIC  
49 LARRYS LANE  
PO BOX 2410  
SUN VALLEY ID 83353-2410

INVOICE NUMBER	TOTAL DUE	CUSTOMER	PAGE
0713750	\$531.97	42820	1 of 1

PLEASE REFER TO INVOICE NUMBER WHEN  
MAKING PAYMENT AND REMIT TO:

FERGUSON WATERWORKS #1701  
PO BOX 802817  
CHICAGO, IL 60680-2817

SHIP TO:

SHIP WHSE.	SELL WHSE.	TAX CODE	CUSTOMER ORDER NUMBER	SALESMAN	JOB NAME	INVOICE DATE	BATCH
1987	1987	IDE	FLANGE COUPLINGS	AE	FLANGE COUPLINGS	05/22/19	IO 34668

ORDERED	SHIPPED	ITEM NUMBER	DESCRIPTION	UNIT PRICE	UM	AMOUNT
2	2	RALPHAFC700	6 RSTRND FLG COUP 6 60-7.00	265.985	EA	531.97
INVOICE SUB-TOTAL						531.97

LEAD LAW WARNING: IT IS ILLEGAL TO INSTALL PRODUCTS THAT ARE NOT "LEAD FREE" IN ACCORDANCE WITH US FEDERAL OR OTHER APPLICABLE LAW IN POTABLE WATER SYSTEMS ANTICIPATED FOR HUMAN CONSUMPTION. PRODUCTS WITH "NP" IN THE DESCRIPTION ARE NOT LEAD FREE AND CAN ONLY BE INSTALLED IN NON-POTABLE APPLICATIONS. BUYER IS SOLELY RESPONSIBLE FOR PRODUCT SELECTION.

1-68-00  
JK

Thank you for your business



TERMS: NET 10TH PROX	ORIGINAL INVOICE	TOTAL DUE	\$531.97
----------------------	------------------	-----------	----------

All past due amounts are subject to a service charge of 1.5% per month, or the maximum allowed by law, if lower. If Buyer fails to pay within terms, then in addition to other remedies, Buyer agrees to pay Seller all costs of collection, including reasonable attorney fees. Complete terms and conditions are available upon request or at <https://www.ferguson.com/content/website-info/terms-of-sale>, incorporated by reference. Seller may convert checks to ACH.



10605 SW Allen Blvd. • Beaverton, Oregon 97005

Electrical Supplies for Commercial / Industrial Controls / Utilities / Datacom / Tools

BRANCHES THROUGHOUT THE WEST TO SERVE YOU



DATE 6/12/19 TIME 8:54:46  
SALES ORDER  
PICK TICKET

PAGE

1

REMIT TO  
SOLD TO

Hailey  
PO BOX 418759  
BOSTON MA  
02241 8759

LOCATION  
Hailey  
3990 Woodside Blvd  
Hailey ID  
83333  
Phone #208 788 3544

PAYMENT CHARGE  
DOCUMENT # V372828  
DATE 6/12/19  
CUST # 137141  
BRANCH 105

Sun Valley Water & Sewer  
Box 2410  
Sun Valley ID  
83353  
Phone #: 208 622 7611

SHIP TO  
Sun Valley Water & Sewer  
3990 Woodside Blvd  
Hailey ID  
83333

SPECIAL INSTRUCTIONS  
ORDER BY: DAN SPRINGER  
PCKUP BY:

CUST PO #	JOB NAME	JOB #	SLS	SALES	ORDER DATE	SHIPPING METHOD	
WELL 3			B05	BYI	6/12/19	PICKUP	PREPAID

LINE	PRODUCT / DESCRIPTION	U/M	ORD	SHP	BO	UNIT PRICE	DISCOUNT	EXT AMOUNT
001	RAC51730 0295589 \$15 003 00F	RAC 5173-0 1G WP BLANK CVR	C	1	1	0	213.38910	2.13
002	RAC53210 0295588 \$15 003 00E	RAC 5321-0 1G 1/2 4H	C	1	1	0	1054.99520	10.55
003	DOTRW21 0676006 \$03 002 00F	30103 RW21 3/4X1/2 RED WASHE	C	6	6	0	10.55600	.63

INVOICES AND STATEMENTS ONLINE 24/7 / WWW.PLATT.COM

*New line - value  
1-48-00  
W*

NO. CTNS	WEIGHT	SHIPPED VIA	SHIP DATE	FILLED BY	CHECKED BY	PRICED BY	ENTERED BY	AMOUNT	
								13.31	
END OF ORDER								TAX 6.000 % Shipping & Handling	.00 .00
RECEIVED BY			RECEIVED BY (PRINT NAME)			DATE RECEIVED		TOTAL DUE →	13.31

SPECIAL ORDER MATERIALS NOT SUBJECT TO THE 12% CLAIMS FEE OR BREAKAGE. SHORTAGE OR DAMAGE MUST BE FILED WITH CARRIER. 22% MINIMUM SHIPPING CHARGE. 25% OR ABOVE FREIGHT TOLLS.

## Report Criteria:

Remittance.Vendor address = Yes

Vendor.Termination date is null

Vendor Number	Name	Address 1	City	State/Province
6	ALPINE TREE SERVICE	P O BOX 2790	HAILEY	ID
22	AMERIGAS	P O BOX 660288	DALLAS	TX
25	Analytical Laboratories,inc.	1804 N. 33rd St.	Boise	ID
30	Anderson Asphalt Paving	PO Box 759	Hailey	ID
35	Anderson, Anthony	PO Box 5986	Ketchum	ID
50	Atkinson's Market	PO Box 2088	Ketchum	ID
60	AWWA	P O BOX 972997	DALLAS	TX
61	PNWS-AWWA	P O BOX 872467	VANCOUVER	WA
70	Banyan Technology Inc.	PO Box 5083	Twin Falls	ID
85	Benchmark Associates	PO Box 733	Ketchum	ID
90	Benson, Chris	PO Box 778	Sun Valley	ID
106	BISNETT INSURANCE INC.	BOX 5567	KETCHUM	ID
111	BLAINE COUNTY CLERK	206 FIRST AVE SOUTH	HAILEY	ID
112	BLAINE COUNTY P & Z	219 1ST AVE SOUTH, SUITE 208	HAILEY	ID
113	BLAINE COUNTY EXTENSION	302 1ST AVENUE SOUTH	HAILEY	ID
120	Blue Cross Of Idaho	PO Box 6948	Boise	ID
125	Blue Printing	PO Box 627	Sun Valley	ID
126	BOISE OFFICE EQUIPMENT	330 N ANCESTOR PLACE SUITE 100	BOISE	ID
127	BOLEN'S CONTROL HOUSE INC.	7908 W WOODLARK STREET	BOISE	ID
145	Brooks Welding	PO Box 2125	Ketchum	ID
160	BUREAU OF OCCUPATIONAL LICENSE	700 WEST STATE STREET	BOISE	ID
165	BURKS EXCAVATION CORP OF IDAHO	640 CD OLENA DR	HAILEY	ID
170	Business As Usual	PO Box 3120	Ketchum	ID
175	CASELLE INC.	1656 EAST BAY BLVD.,	PROVO	UT
180	CH2M Hill INC.	PO BOX 200991	DALLAS	TX
185	Chateau Drug	PO Box 9200	Ketchum	ID
186	CINTAS CORPORATION	PO BOX 631025	CINCINNATI	OH
190	Clear Creek Disposal	PO Box 130	Ketchum	ID
193	CLEAR WATER ROBOTICS	P O BOX 1601	NAMPA	ID
205	Color Haus	PO Box 2085	Ketchum	ID
213	CONRAD BROTHERS OF IDAHO, INC.	PO BOX 3432	HAILEY	ID
215	Consolidated Supply Co.	PO Box 5788	Portland	OR
220	COX BUSINESS SERVICES	P O BOX 2742	OMAHA	NE
222	Crum Electric Supply Co.	1165 English Ave.	Casper	WY
223	CUMMINS ROCKY MOUNTAIN LLC	P.O. BOX 912138	DENVER	CO
235	D AND L SUPPLY	880 W. 150 N.	LINDON	UT
237	Data Tel Communications	680 South Progress Avenue	Meridian	ID
245	Davis Embroidery	PO Box 6040	Ketchum	ID
254	DELTA DENTAL OF IDAHO	P O BOX 271372	SALT LAKE CITY	UT
260	Dept Of Environmental Quality	1410 N. Hilton St	Boise	ID
270	Dig Line Inc	8310 W Ustick Rd Ste 100	Boise	ID
273	DIVISION OF BUILDING SAFETY	1090 EAST WATERTOWER STREET	MERIDIAN	ID
275	EC Power Systems Of Idaho	4499 Market Street	Boise	ID
286	EGGERS ASSOCIATES P.A.	P O BOX 953	KETCHUM	ID
288	ELEVATION GARAGE DOORS LLC	PO BOX 154	KETCHUM	ID
295	Federal Express	PO Box 94515	Palatine	IL
297	FERGUSON ENTERPRISES LLC #3007	PO BOX 847411	DALLAS	TX
300	Fini Machinery Inc.	410 N. 120 E.	Shoshone	ID
305	Fire Services of Idaho Inc		Chubbuck	ID
310	F-Stop	PO Box 2048	Ketchum	ID
315	G C Systems Inc	PO Box 848	Sumner	WA
320	Galena Engineering Inc	PO Box 425	Ketchum	ID
321	GALENA GROUND WATER DISTRICT	PO BOX 2761	SUN VALLEY	ID
325	Garrett Construction Inc	PO Box 128	Ketchum	ID

Vendor Number	Name	Address 1	City	State/Province
333	GRAINGER	DEPT. 836947077	KANSAS CITY	MO
347	Hawkins & Company	4777 Wallace Lane	Salt Lake City	UT
351	HIGH COUNTRY NEWS	PO BOX 1090	PAONIA	CO
365	Houston Lumber Co.	PO Box 2236	Ketchum	ID
385	Humphrey, Joseph K.	PO Box 5	Sun Valley	ID
390	Hunter Landscape, Inc.	PO Box 2045	Sun Valley	ID
398	IDAHO CHAPTER OF IAEI	P O BOX 936	KUNA	ID
400	Icma Retirement Trust - 457		Baltimore	MD
405	ICRMP	PO BOX 15116	BOISE	ID
409	IDAHO DEQ	STATE FISCAL OFFICE	BOISE	ID
410	Idaho Dept. Of Labor	Attn Cashier	Boise	ID
415	IDAHO DEPART OF WATER RESOURCE		BOISE	ID
420	Idaho Lumber	PO Box 280	Hailey	ID
425	EXPRESS PUBLISHING INC.	PO BOX 1013	KETCHUM	ID
429	IDAHO POWER	P O BOX 7868	BOISE	ID
430	Idaho Power	Processing Center	Seattle	WA
435	IDAHO RURAL WATER ASSOCIATION	6065 W. CORPORAL LANE	BOISE	ID
440	Idaho State Tax Commission	PO Box 76	Boise	ID
441	IDAHO STATE TREASURER'S OFFICE	ATTN:IDAHO BOND BANK AUTHORITY	BOISE	ID
443	IDAHO WATER USERS ASSOCIATION	1010 W. JEFFERSON STREET	BOISE	ID
451	INDEPENDENT AUTOMOTIVE SERVICE,	P O BOX 761	SUN VALLEY	ID
457	INTERMOUNTAIN AUTO GLASS INC	5015 W. EMERALD ROAD	BOISE	ID
460	Intermountain Gas Co	PO BOX 5600	BISMARCK	ND
465	Interstate Electric Supply	PO Box 8006	Boise	ID
470	ISPWC		BOISE	ID
480	IWWOCB Inc	PO Box 551	Lewiston	ID
490	Joe's Backhoe Service, Inc.	PO Box 54	Richfield	ID
515	Ketchum, City of	PO Box 2315	Ketchum	ID
521	KOLMAN CONCRETE INC.	140 LABRADOR LANE	BELLEVUE	ID
530	Lab Safety Supply Inc	PO Box 5004	Janesville	WI
540	Layne Pumps Inc	PO Box 640	Twin Falls	ID
548	LES SCHWAB TIRE CENTER	520 N RIVER STREET	HAILEY	ID
550	MATTHEW BENDER & CO., INC	PO BOX 733106	DALLAS	TX
565	Loyd, James D.	PO Box 745	Sun Valley	ID
567	LUNCEFORD EXCAVATION INC.	P O BOX 739	KETCHUM	ID
570	Lutz Rentals	PO Box 2166	Ketchum	ID
575	Magic Valley Labs, Inc	PO Box 1867	Twin Falls	ID
576	MATERIALS TESTING & INSPECTION	2791 S. VICTORY VIEW WAY	BOISE	ID
577	Mattson Fire Sprinklers, Inc.	P O Box 3681	Ketchum	ID
578	MC COY'S PAINTING	104 COVE LN	HAILEY	ID
581	PATRICK J MCMAHON	P O BOX 955	SUN VALLEY	ID
582	MAHLKE HUNSAKER & CO, PLLC	281 CANYON CREST DR W	TWIN FALLS	ID
620	MUELLER SYSTEMS	10210 STATESVILLE BLVD	CLEVELAND	NC
624	H.D. FOWLER COMPANY	PO BOX 84368	SEATTLE	WA
630	National Waterworks Inc.	FILE 56214	LOS ANGELES	CA
636	NEUNER, ANDY	P O BOX 4201	KETCHUM	ID
655	Ohio Gulch Transfer Station	PO Box 2367	Hailey	ID
670	Pipeco Inc	PO Box 386	Ketchum	ID
677	PLATT ELECTRIC SUPPLY, INC	PO BOX 418759	BOSTON	MA
680	Pollardwater	PO BOX 417592	BOSTON	MA
700	Public Employee Retirement Sys	PO Box 83720	Boise	ID
710	CENTURY LINK	P O BOX 91155	SEATTLE	WA
735	River Run Auto Parts	PO Box 1660	Ketchum	ID
737	ROAD WORK AHEAD CONSTRUCTION	729 COMMERCIAL AVE	TWIN FALLS	ID
741	J. EVAN ROBERTSON P.A.	P O BOX 1906	TWIN FALLS	ID
745	MARCO ROMERO COMPUTER SERVIC	P O BOX 4956	KETCHUM	ID
755	S. Erwin Excavation Inc.	PO Box 1112	Bellevue	ID
770	Sawtooth Paint & Airless	PO Box 3624	Hailey	ID

Vendor Number	Name	Address 1	City	State/Province
772	SAWTOOTH WOOD PRODUCTS, INC	P O BOX 452-775 S MAIN	BELLEVUE	ID
785	Severn Trent Service	Water Purific. Solutions Inc.	Pasadena	CA
795	SILVER CREEK SUPPLY	11427 WEST EXECUTIVE DRIVE	BOISE	ID
798	SKINNER FAWCETT	BOX 700	BOISE	ID
805	SPARLING INSTRUMENTS, LLC	P O BOX 2999	PHOENIX	AZ
806	DANIEL S. SPRINGER	211 W. ELM STREET	HAILEY	ID
810	Standard Insurance Co	PO Box 5676	Portland	OR
815	Standard Insurance Fund	PO Box 1038	Boise	ID
816	STANDARD PLUMBING SUPPLY CO.	PO BOX 419	HAILEY	ID
820	State Insurance Fund	PO Box 990002	Boise	ID
830	Stock Building Supply	808	Los Angeles	CA
835	Sun Valley Company		Sun Valley	ID
837	SUN VALLEY ELKHORN ASSOCIATION	P O BOX 1708	SUN VALLEY	ID
845	Sun Valley Title	PO Box 2365	Ketchum	ID
855	CITY OF SUN VALLEY	P O BOX 416	SUN VALLEY	ID
886	THE WATER REPORT	260 NORTH POLK STREET	EUGENE	OR
890	Thornton Heat & Sheetmetal Inc	PO Box 242	Ketchum	ID
895	U.S. Postal Service		Sun Valley	ID
915	United Oil	P O Box 5159	Twin Falls	ID
920	United Parcel Service			
925	United Pipe & Supply	PO Box 6326	Portland	OR
927	UNITED STATES TREASURY			
935	USA Blue Book	PO Box 9004	Gurnee	IL
975	Verizon Wireless	PO BOX 660108	DALLAS	TX
1005	Walton, Douglas	PO Box 1093	Ketchum	ID
1011	WATER DISTRICT 37	107 WEST 1ST	SHOSHONE	ID
1020	WELLS FARGO BANK, N.A.	877 WEST MAIN ST., 3RD FLOOR	BOISE	ID
1021	Wells Fargo Bank	WF8113	Minneapolis	MN
1022	WELLS FARGO FINANCIAL LEASING	P O BOX 10306	DES MOINES	IA
1030	Wells Fargo Business Credit	Dept 1494	Denver	CO
1035	Wells Fargo Payment Remittance Ctr	PO Box 77033	Minneapolis	MN
1036	WELLS FARGO BROKERAGE SER. LLC	3295 ELDER STREET, SUITE 214	BOISE	ID
1037	Western States Equipment	P O Box 3805	Seattle	WA
1044	WHITEHEAD LANDSCAPING INC.	4302 GLENBROOK DRIVE	HAILEY	ID
1060	WOOD RIVER LOCK LLC	P O BOX 306	KETCHUM	ID
1078	XEROX CORPORATION	BOX 7405	PASADENA	CA
1081	ZIONS BANK PUBLIC FINANCE	ONE SOUTH MAIN ST, 18TH FLOOR	SALT LAKE CITY	UT
1083	ZIONS BANK	ATT. ANNA MC CULLY	SEATTLE	WA
1088	ANDREW J NEUNER			
1090	WIN-911	2024 E ST ELMO	AUSTIN	TX
1091	MAXWELL STRUCTURAL DESIGN STU	PO BOX 1911	SUN VALLEY	ID
1092	IDAHO WATER UTILITIES COUNCIL	ATTN: KYLE KIHS	VANCOUVER	WA
1093	JEANENE M PARKER	PO BOX 2787	HAILEY	ID
1095	CUSTOMER - REFUND	PO BOX	SUN VALLEY	ID
1098	FARMER BROTHERS COFFEE	PO BOX 732855	DALLAS	TX
1099	IMPACT AUTO BODY	4111 GLENBROOK DR	HAILEY	ID
1101	INTEGRITY INSPECTION SOLUTIONS, I	204 S DUDLEY LN	NAMPA	ID
1102	AMERICAN LEAK DETECTION	PO BOX 44677	BOISE	ID
1103	COPY & PRINT LLC	PO BOX 2218	HAILEY	ID
1104	Wood River RC&D	141 7th Avenue E	Goodiing	ID
1105	MCKENZIE, MELISSA	PO BOX 1868	HAILEY	ID
1106	WENDY KIRKPATRICK	PO BOX 1228	KETCHUM	ID
1107	Idaho Bureau of Occupational Licences	PO Box 83720	Boise	ID
1108	EideBailey LLP	877 W. Main St., Ste. 800	Boise	ID



# INVOICE

Date	Invoice #
6/12/2019	1341

Bill To
Sun Valley Water & Sewer Pat McMahon

Ship To
49 Larrys Ln Sun Valley, ID 83353

P.O. Number	Terms	Rep	Ship	Via	F.O.B.	Project
	Due on receipt	BG	4/30/2019			

Quantity	Item Code	Description	U/M	Price Each	Amount
1	Fire Sprinkler Ins	Performed annual inspection on (1) dry pipe fire sprinkler system. Issues found when control valve broke. Customer requested a new BFP per code 2/14		160.00	160.00
1	Backflow Cert 1st			80.00	80.00
2	Service Rate	Journeyman labor to let system soak and unlog inspector's test	hr	90.00	180.00

4-03-60  
*PK*

We have changed our name to Mountain Fire Sprinklers. Please do not make checks payable to Mattson

**Total** 5420.00

Phone #  
208-726-5722

E-mail  
billg@mountainfiresprinklers.com

# ORDER ACKNOWLEDGEMENT

Mountain States Instruments/CFM-SF, Inc.  
 815 Arnold Drive Suite 118  
 Martinez, CA 94553



Westco Reference Number	
1098359	
Date Entered	Page
5/21/2019 00:00:00	1 of 1

925 370-1500

**Bill To:**  
 Sun Valley Water/Sewer District  
 PO Box 2410  
 Sun Valley, ID 83353

**Ship To:**  
 Sun Valley Water / Sewage District  
 49 Larry Lane  
 Attn: Dan Springer / Well # 3  
 Sun Valley, ID 83353

Customer ID: 112557

<i>PO Number</i>				<i>Taker</i>				
WELL # 3				MATTL				
<i>Quantities</i>					<i>Item ID</i> <i>Item Description</i>	<i>Pricing UOM</i> <i>Unit Size</i>	<i>Unit Price</i>	<i>Extended Price</i>
<i>Ordered</i>	<i>Allocated</i>	<i>Remaining</i>	<i>UOM</i> <i>Unit Size</i>	<i>Qty.</i>				

**Order Note:** SHIP: 4 TO 6 WEEKS SUBJECT TO  
 PRIOR SALE.  
 FOB: FACTORY  
 FREIGHT: PRE-PAY & ADD

**Delivery Instructions:** BESTWAY

1.0	0.0	1.0 EA	D	FM656-068-115-0	EA	3,700.0000	3,700.00
			1.0	6 inch Sparling FM656 Tigermag FM656=Flanged Magmeter 06= 06 inch nominal size 8= FEP liner (NSF61 Drinking Water Approval) 1= Stainless Steel Electrodes 1=AWWA CLD 150# flanges 5= Remote NEMA-4X encl., 15 ft cable 0= 77-265VAC Flow Range:85 GPM Min. to 2,800 GPM Max	1.0		
35.0	0.0	35.0 EA	D	CS656	EA	5.0000	175.00
			1.0	Sparling Extra Remote Cable Option Additional Cable (over 15 feet). \$5.00/ft.	1.0		
1.0	0.0	1.0 EA	D	AC615-063	EA	260.0000	260.00
			1.0	Pair of 6 inch 316 SS Grounding Rings Pair of 6 inch 316 SS Grounding Rings. The use of grounding ring is recommended to ensure accuracy, and are required if adjacent piping is lined or nonconductive.	1.0		

Total Lines: 3

**SUB-TOTAL:** 4,135.00  
**TAX:** 0.00  
**AMOUNT DUE:** 4,135.00

1-68-00

APPROVED: \_\_\_\_\_  
 PAID: \_\_\_\_\_

2019 BUDGET HEARING NOTIFICATION

BLAINE COUNTY

Name of Taxing District SUN VALLEY WATER AND SEWER DISTRICT

Date of Budget Hearing AUGUST 19, 2019

Time of Budget Hearing 8:30 A.M.

Location and Address of Budget Hearing SUN VALLEY CITY HALL

81 ELKHORN RD

Contact Person for Taxing District JEANENE M PARKER OR PAT MCMAHON

Telephone Number of Contact Person (to be listed on assessment notice) 622-7610

Please check here if you are a district where no budget hearing is required by law

Dated this 27th day of MARCH, 2019



\_\_\_\_\_  
Signature of Taxing District Representative

**THIS FORM MUST BE RETURNED BY APRIL 30, 2019!!!!!!**

Return completed form to: JoLynn Drage, Blaine County Clerk  
206 1<sup>st</sup> Ave. S., Ste. 200  
Hailey, Idaho 83333  
Fax: 208-788-5501  
E-mail: [jdrage@co.blaine.id.us](mailto:jdrage@co.blaine.id.us)

SUN VALLEY WATER AND SEWER DISTRICT  
SEWER TREATMENT PLANT OPERATIONAL EXPENSES

MONTH ENDING: May 2019

CHECK #	IN FAVOR OF:	DATE	STP CHARGE	SUN VALLEY 41.44%	DESCRIPTION
	SEE ATTACHED	12/31	\$ 32,710.03	\$ 13,555.04	
	Payroll	12/31	\$ 26,204.28	\$ 10,859.05	
	Retirement	12/31	\$ 2,966.32	\$ 1,229.24	
	FICA	12/31	\$ 2,004.63	\$ 830.72	
	Health Insurance	12/31	\$ 12,474.97	\$ 5,169.63	
	Dental Insurance	12/31	\$ 325.44	\$ 134.86	
	Long Term Disability	12/31	\$ 105.07	\$ 43.54	
	NBS - HRA Admin Fees	12/31	\$ 26.59	\$ 11.02	
	Insurance Admin Fees	12/31	\$ 50.63	\$ 20.98	
	NBS - HRA for 2019	12/31	\$ 268.48	\$ 111.26	
	NBS - Vision HRA for 2019	12/31	\$ 159.80	\$ 66.22	
**	Worker's Compensation	12/31	\$ 457.22	\$ 189.47	
<b>TOTALS</b>			<b>\$ 77,753.46</b>	<b>\$ 32,221.03</b>	


KETCHUM PERCENT	58.56%
KETCHUM DOLLAR SHARE	\$ 45,532.43
SUN VALLEY PERCENT	41.44%
SUN VALLEY DOLLAR SHARE	\$ 32,221.03

TOTAL DUE \$ 32,221.03

Capital	Expense	50%
Banyan Technology Inc.	\$ 801.36	
HDR Engineering, Inc.	\$ 7,885.82	
HDR Engineering, Inc.	\$ 8,520.25	
Pipeco, Inc.	\$ 260.00	
RSCI	\$ 164,370.85	
	\$ 181,838.28	\$ 90,919.14

Actual Total Due \$123,140.17

1-69-00 90,919.14  
4-03-40-32,221.03

APPROVED 
PAID _____

Report Criteria:

Report type: GL detail  
Vendor Name = (NOT LIKE) "DIG LINE"  
Invoice Detail GL Account = "6543507500"- "6543508300", "6743506900"- "6743508300"

GL Period	Check Issue Date	Check Number	Payee	Invoice Number	Invoice GL Account	Check Amount
05/19	05/06/2019	81228	BANYAN TECHNOLOGY INC.	20571	67-4350-7810	801.36 ✓
05/19	05/06/2019	81262	HDR ENGINEERING, INC.	1200185509	67-4350-7810	7,885.82 ✓
05/19	05/06/2019	81289	PIPECO, INC.	S3316037001	67-4350-7800	260.00 ✓
05/19	05/20/2019	81362	HDR ENGINEERING, INC.	1200192000	67-4350-7810	8,520.25 ✓
05/19	05/20/2019	81393	RSCI	12	67-4350-7810	164,370.85 ✓
<b>Grand Totals:</b>						<b>181,838.28</b>

Summary by General Ledger Account Number

GL Account	Debit	Credit	Proof
67-2030-0000	.00	181,838.28-	181,838.28-
67-4350-7800	260.00	.00	260.00
67-4350-7810	181,578.28	.00	181,578.28
<b>Grand Totals:</b>	<b>181,838.28</b>	<b>181,838.28-</b>	<b>.00</b>

Banyan Technologies Inc.  
P.O. Box 5083  
Twin Falls, Idaho 83303-5083

# Invoice

Date	Invoice #
4/12/2019	20571

<b>Bill To</b>
Ketchum City Utilities Accounts Payable PO. Box 2315 Ketchum, Idaho 83340

<b>Ship To</b>

P.O. Number	Terms	Rep	Ship	Via	F.O.B.	Project
Mick M	Net 15		4/12/2019			
Quantity	Item Code	Description			Price Each	Amount
1	Computer Equipment	ETN UNMANAGED SWITCH 4 COPPER, 4 MULTI-MODE SC -40° to 75°C (Grit Odor Building)			746.35	746.35
1	Shipping	UPS Second Day Air			55.01	55.01
67-4350-7810 M/M 435004						
<b>Total</b>						\$801.36



cc: Pepi Ursillo/Water BG Manager

File 00103.257441



April 14, 2019

Mick Mummert  
Wastewater Superintendent  
City of Ketchum  
P.O. Box 2315  
Ketchum, ID 83340

**Subject:** Ketchum / Sun Valley Water & Sewer District - Headworks Construction Engineering Services  
Status Report and Invoice for March 3, 2019 through March 30, 2019.

Dear Mr. Mummert:

Enclosed is a copy of our billing for engineering services for the Headworks construction project during the invoicing period. Provided below is a summary of the work completed for each task and budget tracking during this billing cycle.

**Task 1 – Construction Management and Administration**

Activities performed during this invoicing period include:

- Administration of project engineering financials
- Administration of contractor submittals

**Task 2 – Construction Engineering**

Activities performed in included:

- Monthly on-site meeting (March 13<sup>th</sup>).
- Monthly conference call (March 27<sup>th</sup>).
- Regular communication with City inspection (Jeff Vert / Mick Mummert) and contractor (RSCI).
- Reviewed payment application #11.
- Reviewed construction issues with Contractor.
- Preparation of change order #04.

**Task 3 – Field Services**

No fee associated with this task. Work being completed by Ketchum staff.

**Task 4 – System Commissioning**

Engineering services for system commissioning included:

- Screen and washer startup with FSM.
- Coordination of BioAir vessel repair.
- Preparation of O&M manual.

**Task 5 – Project Close-out (Record Drawings)**

Engineering services for close-out included:

- Preparation of record drawings.

**Budget Tracking**

A summary of percent spent for the Services during Construction work is shown below.

- Task 1: Construction Administration is 70% spent.
- Task 2: Construction Engineering 92% spent.
- Task 4: System Commissioning is 26% spent.

67-4350-7810  
 Contract # 20175  
 MUM  
 435004



HDR Engineering, Inc.  
 Boise, ID 83706-6659

Please send remittance with copy of invoice to  
 HDR, Inc.  
 US Engineering Accounts Receivable  
 PO Box 74008202  
 Chicago, IL 60674-8202

To  
 City of Ketchum/SVSWD  
 Mick Mummert  
 Wastewater Superintendent  
 PO Box 2316  
 Ketchum, ID 83340

Invoice Number 1200192000  
 Invoice Date May 13, 2019  
 Period Ending April 27, 2019  
 Project Number 10112020 \$6,020.25  
 DC Engineering \$2,500.00  
 Amount Due \$8,520.25

Client:  
 Contract: 20175

For Professional Services performed in connection with City of Ketchum/SVSWD Headworks Construction Engineering Services  
 April 1, 2019 - April 27, 2019

CITY OF KETCHUM/SVSWD

Task 1-Construction Administration

LABOR COSTS	Hours	Extension	LABOR	EXPENSE	TOTAL
Quick, Sarah	4.25	\$446.25			
<b>TOTAL LABOR</b>	<b>4.25</b>		<b>\$446.25</b>		
<b>DIRECT COSTS</b>					
Travel (B. Bjerke) Meeting				\$40.00	
<b>TOTAL EXPENSES</b>				<b>\$40.00</b>	
<b>TOTAL Task 1-Construction Administration</b>					<b>\$486.25</b>

Task 2-Construction Engineering

LABOR COSTS	Hours	Extension	LABOR	EXPENSE	TOTAL
Bjerke, Brad	20.00	\$4,420.00			
<b>TOTAL LABOR</b>	<b>20.00</b>		<b>\$4,420.00</b>		
<b>SUBCONSULTANTS</b>					
DC Eng (With 10% Markup)				\$2,750.00	
<b>TOTAL SUBCONSULTANTS</b>				<b>\$2,750.00</b>	
<b>TOTAL Task 2-Construction Engineering</b>					<b>\$7,170.00</b>

Task 4-System Commissioning

LABOR COSTS	Hours	Extension	LABOR	EXPENSE	TOTAL
Raibley, Adam	18.00	\$864.00			
<b>TOTAL</b>	<b>18.00</b>		<b>\$864.00</b>		
<b>TOTAL Task 4-System Commissioning</b>					<b>\$864.00</b>

**TOTAL DUE THIS INVOICE \$8,520.25**

Project Summary	CONTRACT AMOUNT	CURRENT INVOICE	INVOICED PREVIOUSLY	TOTAL INVOICED	CONTRACT BALANCE	PERCENTAGE SPENT
HDR Engineering	\$226,800.00	\$6,020.25	\$183,357.25	\$189,377.50	\$37,422.50	83%
DC Engineering	\$18,000.00	\$2,500.00	\$10,197.50	\$12,697.50	\$5,302.50	71%
<b>TOTAL</b>	<b>\$244,800.00</b>	<b>\$8,520.25</b>	<b>\$193,554.75</b>	<b>\$202,075.00</b>	<b>\$42,725.00</b>	<b>83%</b>
Task Summary	CONTRACT AMOUNT	CURRENT INVOICE	INVOICED PREVIOUSLY	TOTAL INVOICED	CONTRACT BALANCE	PERCENTAGE SPENT
Task 1-Construction Administration	\$28,000.00	\$486.25	\$20,282.31	\$20,778.56	\$8,221.44	72%
Task 2-Construction Engineering	\$159,050.00	\$7,170.00	\$146,071.84	\$153,241.84	\$5,808.06	96%
Task 3-Field Services	\$0.00	\$0.00	\$0.00	\$0.00	\$0.00	0%
Task 4-System Commissioning	\$30,850.00	\$864.00	\$8,136.00	\$9,000.00	\$21,850.00	29%
Task 5-Project Close-out (Record Drawings)	\$25,900.00	\$0.00	\$19,054.50	\$19,054.50	\$6,845.50	74%
<b>TOTAL</b>	<b>\$244,800.00</b>	<b>\$8,520.25</b>	<b>\$193,554.75</b>	<b>\$202,075.00</b>	<b>\$42,725.00</b>	<b>83%</b>



May 13, 2019

Mick Mummert  
Wastewater Superintendent  
City of Ketchum  
P.O. Box 2315  
Ketchum, ID 83340

**Subject:** Ketchum / Sun Valley Water & Sewer District - Headworks Construction Engineering Services  
Status Report and Invoice for April 1, 2019 through April 27, 2019.

Dear Mr. Mummert:

Enclosed is a copy of our billing for engineering services for the Headworks construction project during the invoicing period. Provided below is a summary of the work completed for each task and budget tracking during this billing cycle.

**Task 1 – Construction Management and Administration**

Activities performed during this invoicing period include:

- Administration of project engineering financials
- Administration of contractor submittals

**Task 2 – Construction Engineering**

Activities performed in included:

- Monthly on-site meeting (April 19<sup>th</sup>).
- Monthly conference call (April 3<sup>rd</sup>).
- Regular communication with City inspection (Jeff Vert / Mick Mummert) and contractor (RSCI).
- Reviewed payment application #12.
- Reviewed construction issues with Contractor.

**Task 3 – Field Services**

No fee associated with this task. Work being completed by Ketchum staff.

**Task 4 – System Commissioning**

Engineering services for system commissioning included:

- Draft of O&M manual changes were supplied on May 2<sup>nd</sup>.
- Substantial completion inspection on April 19 and May 2<sup>nd</sup>.

**Task 5 – Project Close-out (Record Drawings)**

Engineering services for close-out included:

- Preparation of record drawings (on-going).

**Budget Tracking**

A summary of percent spent for the Services during Construction work is shown below.

- Task 1: Construction Administration is 72% spent.
- Task 2: Construction Engineering 96% spent.
- Task 4: System Commissioning is 29% spent.
- Task 5: Project Close-out (Record Drawings) 74% spent.

**TO OWNER/CLIENT:**  
 City of Ketchum  
 480 East Ave. N  
 Ketchum, Idaho 83340

**PROJECT:**  
 505 - Ketchum/SVWSD Headworks Improvements  
 110 River Ranch Road  
 Ketchum, Idaho 83340

**APPLICATION NO:** 12  
**INVOICE NO:** 12  
**PERIOD:** 04/01/18 - 04/30/19  
**PROJECT NO:** 505  
**CONTRACT DATE:** 05/21/2018

**DISTRIBUTION TO:**

67-4350-7810  
 Contract # 20167  
 Miller  
 435004

**FROM CONTRACTOR:**  
 RSC  
 333 West Rosa Street, Ste. 200  
 Boise Idaho 83706

**VIA ARCHITECT/ENGINEER:**  
 Brad Byrke (HDR)  
 412 Parkcenter Blvd Suite 100  
 Boise, 83706

**CONTRACT FOR:** 505 - Ketchum/SVWSD Headworks Improvements Prime Contract  
**CONTRACTOR'S APPLICATION FOR PAYMENT**

Application is made for payment as shown below, in connection with the Contract. Continuation Sheet is attached.

1. Original Contract Sum	\$ 2,481,360.00
2. Net change by change orders	(\$56,185.74)
3. Contract sum to date (line 1 ± 2)	\$ 2,425,174.26
4. Total completed and stored to date (Column G on G703)	\$ 2,385,258.32
5. Retainage:	
a. 2.80% of completed work	\$ 65,421.15
b. 0.00% of stored material	\$ 0.00
Total retainage (Line 5a + 5b or total in column I of G702)	\$ 65,421.15
6. Total earned less retainage (Line 4 less Line 5 Total)	\$ 2,299,837.17
7. Less previous certificates for payment (Line 6 from prior certificate)	\$ 2,135,488.32
8. Current payment due	\$ 164,370.85
9. Balance to finish including retainage (Line 3 less Line 6)	\$ 125,337.39

The undersigned certifies that to the best of the Contractor's knowledge, information and belief, the Work covered by this Application for Payment has been completed in accordance with the Contract documents, that all amounts have been paid by the Contractor for Work which previous Certificates for payment were issued and payments received from the Owner/Client, and that current payments shown herein is now due.

CONTRACTOR RSC

By [Signature] Date 5-6-2019

State of Idaho

County of Ada

Subscribed and sworn to before

me this

6 day of May, 2019

Notary Public: [Signature]  
 My commission expires 6-20-19



**ARCHITECT/ENGINEER'S CERTIFICATE FOR PAYMENT**

In accordance with the Contract Documents based on the on-site observations and the data comprising this application, the Architect/Engineer certifies to the Owner/Client that to the best of the Architect/Engineer's knowledge, information and belief that Work is in accordance with the Contract Documents, and the Contractor is entitled to payment of the AMOUNT CERTIFIED.

AMOUNT CERTIFIED \$ 164,370.85

(Attach explanation if amount certified differs from the amount applied for. Initial all figures on this Application and on the Continuation Sheet that are changed to confirm to the amount certified.)

ARCHITECT/ENGINEER

By [Signature] Date 05/06/2019

This certificate is not negotiable. The amount certified is payable only to the contract named herein. Issuance, payment and acceptance of payment are without prejudice to the rights of the Owner/Client or Contractor under the Contract.

CHANGE ORDER SUMMARY	ADDITIONS	DEDUCTIONS
Total changes approved in previous months by Owner/Client	\$ 95,411.54	(\$151,597.28)
Total approved this Month	\$ 0.00	\$ 0.00
<b>Totals:</b>	<b>\$ 95,411.54</b>	<b>(\$151,597.28)</b>
Net change by change orders	(\$56,185.74)	

ITEM NO.	DESCRIPTION OF WORK	SCHEDULED VALUE	WORK COMPLETED		MATERIALS PRESENTLY STORED (NOT IN D OR E)	TOTAL COMPLETED AND STORED TO DATE (D+E+F)	% (G / C)	BALANCE TO FINISH (C - G)	RETAINAGE
			D	E					
25	HW Screen Channel	\$ 16,900.00	\$ 16,900.00	\$ 0.00	\$ 0.00	\$ 16,900.00	100.00%	\$ 0.00	\$ 845.00
26	HW CLSM Fill	\$ 56,550.00	\$ 56,550.00	\$ 0.00	\$ 0.00	\$ 56,550.00	100.00%	\$ 0.00	\$ 2,827.50
27	HW Backfill	\$ 20,150.00	\$ 20,150.00	\$ 0.00	\$ 0.00	\$ 20,150.00	100.00%	\$ 0.00	\$ 1,007.50
28	HW Building Concrete Footings	\$ 37,400.00	\$ 37,400.00	\$ 0.00	\$ 0.00	\$ 37,400.00	100.00%	\$ 0.00	\$ 1,870.00
29	HW Building Concrete Stem Walls	\$ 37,400.00	\$ 37,400.00	\$ 0.00	\$ 0.00	\$ 37,400.00	100.00%	\$ 0.00	\$ 1,870.00
30	HW Electrical Room Elevated Concrete Slab	\$ 22,400.00	\$ 22,400.00	\$ 0.00	\$ 0.00	\$ 22,400.00	100.00%	\$ 0.00	\$ 784.00
31	HW Masonry	\$ 136,500.00	\$ 136,500.00	\$ 0.00	\$ 0.00	\$ 136,500.00	100.00%	\$ 0.00	\$ 5,460.00
32	HW EIFS	\$ 38,400.00	\$ 0.00	\$ 0.00	\$ 0.00	\$ 0.00	0.00%	\$ 38,400.00	\$ 0.00
33	HW Concrete Slab on Grade	\$ 46,800.00	\$ 46,800.00	\$ 0.00	\$ 0.00	\$ 46,800.00	100.00%	\$ 0.00	\$ 0.00
34	HW Exterior Concrete Slabs & Pads	\$ 18,000.00	\$ 5,400.00	\$ 12,600.00	\$ 0.00	\$ 18,000.00	100.00%	\$ 0.00	\$ 0.00
35	HW Steel Deck & Joists	\$ 22,000.00	\$ 22,000.00	\$ 0.00	\$ 0.00	\$ 22,000.00	100.00%	\$ 0.00	\$ 0.00
36	HW Roofing	\$ 45,000.00	\$ 42,750.00	\$ 2,250.00	\$ 0.00	\$ 45,000.00	100.00%	\$ 0.00	\$ 0.00
37	HW Overhead Rolling Doors	\$ 28,000.00	\$ 10,244.00	\$ 0.00	\$ 16,356.00	\$ 28,000.00	95.00%	\$ 1,400.00	\$ 0.00
38	HW Doors & Hardware	\$ 12,500.00	\$ 0.00	\$ 12,500.00	\$ 0.00	\$ 12,500.00	100.00%	\$ 0.00	\$ 0.00
39	HW Owner Furnished Equipment Install	\$ 28,500.00	\$ 28,500.00	\$ 0.00	\$ 0.00	\$ 28,500.00	100.00%	\$ 0.00	\$ 0.00
40	HW Lighting	\$ 35,000.00	\$ 0.00	\$ 35,000.00	\$ 0.00	\$ 35,000.00	100.00%	\$ 0.00	\$ 0.00
41	HW Set Electrical Gear & Distribution	\$ 37,400.00	\$ 35,530.00	\$ 1,870.00	\$ 0.00	\$ 37,400.00	100.00%	\$ 0.00	\$ 0.00
42	HW Fire Alarm System	\$ 32,600.00	\$ 19,580.00	\$ 9,780.00	\$ 0.00	\$ 29,340.00	90.00%	\$ 3,260.00	\$ 0.00
43	HW Process Instrumentation & Controls	\$ 78,900.00	\$ 48,660.00	\$ 11,835.00	\$ 14,460.00	\$ 74,955.00	95.00%	\$ 3,945.00	\$ 0.00
44	HW Conduit & Raceways	\$ 137,800.00	\$ 130,910.00	\$ 6,890.00	\$ 0.00	\$ 137,800.00	100.00%	\$ 0.00	\$ 0.00
45	HW Conductors & Terminations	\$ 88,000.00	\$ 88,600.00	\$ 29,400.00	\$ 0.00	\$ 88,000.00	100.00%	\$ 0.00	\$ 0.00
46	HW Plumbing	\$ 51,500.00	\$ 51,500.00	\$ 0.00	\$ 0.00	\$ 51,500.00	100.00%	\$ 0.00	\$ 0.00
47	HW HVAC	\$ 140,000.00	\$ 133,000.00	\$ 5,600.00	\$ 0.00	\$ 138,600.00	99.00%	\$ 1,400.00	\$ 0.00
48	HW ODA Fiberglass Duct Work	\$ 110,000.00	\$ 104,500.00	\$ 5,500.00	\$ 0.00	\$ 110,000.00	100.00%	\$ 0.00	\$ 0.00
49	HW Coatings	\$ 35,000.00	\$ 33,250.00	\$ 0.00	\$ 0.00	\$ 33,250.00	95.00%	\$ 1,750.00	\$ 0.00
50	HW Temporary Bypass Piping	\$ 105,000.00	\$ 105,000.00	\$ 0.00	\$ 0.00	\$ 105,000.00	100.00%	\$ 0.00	\$ 5,250.00
51	YARD 24" Sewer	\$ 24,080.00	\$ 24,080.00	\$ 0.00	\$ 0.00	\$ 24,080.00	100.00%	\$ 0.00	\$ 1,204.00
52	YARD 18" Sewer	\$ 53,240.00	\$ 53,240.00	\$ 0.00	\$ 0.00	\$ 53,240.00	100.00%	\$ 0.00	\$ 2,662.00
53	YARD 2" W2	\$ 45,080.00	\$ 45,080.00	\$ 0.00	\$ 0.00	\$ 45,080.00	100.00%	\$ 0.00	\$ 2,254.00
54	YARD 12" ODA	\$ 21,880.00	\$ 21,880.00	\$ 0.00	\$ 0.00	\$ 21,880.00	100.00%	\$ 0.00	\$ 1,084.00
55	YARD 4" Drain	\$ 14,800.00	\$ 14,800.00	\$ 0.00	\$ 0.00	\$ 14,800.00	100.00%	\$ 0.00	\$ 730.00

A ITEM NO.	B DESCRIPTION OF WORK	C SCHEDULED VALUE	D WORK COMPLETED		F MATERIALS PRESENTLY STORED (NOT IN D OR E)	G TOTAL COMPLETED AND STORED TO DATE (D+E+F)	H % (G / C)	I BALANCE TO FINISH (C - G)	RETAINAGE
			FROM PREVIOUS APPLICATION (D + E)	THIS PERIOD					
			59.6	COR#018 Design, Fabricate, & Install 316 SS Mounting Bracket Extensions					
60	PCCO#004								
60.1	COR#023 Contract Adjustment for Weather Sensitive Work	\$ 0.00	\$ 0.00	\$ 0.00	\$ 0.00	\$ 0.00	100.00%	\$ 0.00	\$ 0.00
60.2	COR#025 Delete 2 Pressure Transmitters and Add 2 Differential Pressure Gauges	(\$2,226.80)	(\$2,226.80)	\$ 0.00	\$ 0.00	(\$2,226.80)	100.00%	\$ 0.00	(\$111.33)
60.3	COR#026 Work Change Directive No. 006 - Add Snow Melt System at OH Door Openings	\$ 15,196.77	\$ 4,558.03	\$ 10,637.74	\$ 0.00	\$ 15,196.77	100.00%	\$ 0.00	\$ 758.84
60.4	COR#016 Work Change Directive No. 002 - Electrical Changes	\$ 12,167.87	\$ 12,167.87	\$ 0.00	\$ 0.00	\$ 12,167.87	100.00%	\$ 0.00	\$ 608.39
60.5	COR#027 RFI-004 - Additional Concrete Around Existing Pump Station	\$ 2,949.57	\$ 2,949.57	\$ 0.00	\$ 0.00	\$ 2,949.57	100.00%	\$ 0.00	\$ 147.48
60.6	COR#028 Rotate Carbon Scrubber 180 Degrees	\$ 2,007.15	\$ 2,007.15	\$ 0.00	\$ 0.00	\$ 2,007.15	100.00%	\$ 0.00	\$ 100.36
60.7	COR#024 Modify Splitter Box Baffle Wall	\$ 3,317.22	\$ 3,317.22	\$ 0.00	\$ 0.00	\$ 3,317.22	100.00%	\$ 0.00	\$ 165.86
<b>TOTALS:</b>		<b>(\$62,920.02)</b>	<b>(\$73,557.76)</b>	<b>\$ 10,637.74</b>	<b>\$ 0.00</b>	<b>(\$62,920.02)</b>	<b>100.00%</b>	<b>\$ 0.00</b>	<b>\$ 3,989.26</b>

Grand Totals

A ITEM NO.	B DESCRIPTION OF WORK	C SCHEDULED VALUE	D WORK COMPLETED		F MATERIALS PRESENTLY STORED (NOT IN D OR E)	G TOTAL COMPLETED AND STORED TO DATE (D+E+F)	H % (G / C)	I BALANCE TO FINISH (C - G)	RETAINAGE
			FROM PREVIOUS APPLICATION (D + E)	THIS PERIOD					
			<b>GRAND TOTALS:</b>						

DOCUMENT DETAIL SHEET - APPLICATION AND CERTIFICATE FOR PAYMENT

### Water Rights Review and Peak Use Narrative

The Sun Valley Water and Sewer District (District) water system is supplied by 13 ground water wells that pump into the distribution system and a series of reservoirs located throughout the District. The reservoirs fill based on water system pressure and feed back into the system by gravity. Refer to the following figure entitled "Well and Reservoir Locations" for relative locations of the District's wells and reservoirs. Reservoir volumes can be found in the following table entitled "Sun Valley Water and Sewer District Reservoir Summary." Details of the District wells and their associated water rights are summarized in the following table entitled "Sun Valley/Elkhorn System Beneficial Use Water Rights Review." Two of the District's wells supply a small dedicated River Run System located on the west edge of the District. The River Run System is not connected to the remainder of the District's system (Main System) and is not anticipated to be connected in the future. The two River Run System wells include three water rights. The Mountain Domestic Water Well includes water rights 37-7147 [0.15 cfs (67.33 gpm)] and 37-8834 [0.1 cfs (44.88 gpm)], and the Thermal Well, used to supply a heat exchanger, includes water right 37-8835 [0.59 cfs (264.81 gpm)]. The total approved beneficial use water right for these two wells is 0.84 cfs (377.02 gpm). The remaining eleven wells and their associated water rights supply the majority of the District's customers (Main System) with a total beneficial use water right of 18.7 cfs (7,392.27 gpm). The total approved beneficial use water right for the Total System is approximately 19.54 cfs (7,769.29 gpm).

On July 20, 2003 the District experienced a Peak Hour Demand of approximately 9,235 gpm in the portion of the system (Main System) served by the eleven wells. The basis for this Main System demand is explained below. It is assumed that the River Run System also experienced a peak hour demand event on July 20, 2003 equivalent to the approved beneficial water right of 0.84 cfs (377.02 gpm). The River Run System peak hour demand is assumed to be equal to the flow rates established in their respective Beneficial Use Field Reports. These two small wells in the River Run System are expected to deliver their respective beneficial use water right rate when the pumps are called to run. Therefore, the Total System Peak Hour Demand on July 20, 2003 was 9,612 gpm.

The District's water right portfolio held approximately 6,845 gpm in water rights in July 2003, including the River Run System, with approved beneficial use designation that could be used to meet this Peak Hour Demand. The Peak Hour Demand Shortfall of 2,767 gpm represents the beneficial use water supply shortfall the District experienced on July 20, 2003. This Peak Hour Demand event is based on the sum of the District's well flows for the day and the highest draft rate (via gravity) on the water system reservoirs during that day. The total well pumping recorded on July 20, 2003 for the Main System of 8,865,900 gallons (6,157 gpm), plus the peak reservoir drafting rate totaling approximately 3,078 gpm, plus the peak hour demand of 377.02 gpm for the River Run System yielded a peak hour event of 9,612 gpm. Refer to the District's Main System well water production log for the July 20, 2003 well flows; and the District's July 20, 2003 reservoir level graphs, and the table entitled "Sun Valley Water and Sewer District Reservoir Summary" for the peak reservoir drafting rates. It should be noted that the Lane Ranch Reservoir and the White Cloud Reservoir were not constructed in July 2003. During this Peak Hour Demand event the District was marginally able to respond to the water demand by drafting and drawdown of the District's reservoirs. As a result, the District applied for a Permit on 9-08-2003 to drill Well No. 12 as a first step to meet the water supply shortfall. The Permit for Well No. 12 was authorized by IDWR on 12-18-2003. Ultimately the Proof of Beneficial Use for Well No. 12 was limited to 2.06 cfs. The District next applied for a Permit on May 20, 2005 to drill Well No. 13. The Permit for Well No. 13 was authorized by IDWR on 7-15-2005. The District also had plans to apply for a Permit to drill Well No. 14.

Based on a Total System 2003 equivalent connection unit (ECU) count of 2,788 and the 2003 Peak Hour Demand of 9,612 gpm for the Total System served by the thirteen wells this translates into a Peak Hour Demand/ECU of 3.45 gpm/ECU.

The equivalent connection units detailed in the following table entitled "SVWSD Single Residential Equivalent Connections and Multi Family Equivalent Connection Added 2005 through 2018" represent ECUs served by the District that have come online since 2005, the time of the water right permit application (37-21465). Several other businesses have also come online since 2005. The additional ECUs that have been added since 2005 total 479 ECUs. Using the Peak Hour Demand/ECU of 3.45 gpm/ECU, the additional Beneficial Use Demand since 2005 totals 1,653 gpm.

**Sun Valley/Elkhorn System Beneficial Use Water Rights Review**

Water Right	Point of Diversion	Water Right Application Rate (cfs)	Water Right Application Rate (gpm)	Approved Beneficial Use Rate (cfs)	Approved Beneficial Use Rate (gpm)
37-22444	Well 1	0.31	139.14	0.31	139.14
37-22445	Well 2	0.52	233.39	0.52	233.39
37-22447	Well 3	0.95	426.39	0.95	426.39
37-2722	Wells 4A and 5	3.63	1629.26	3.63	1629.26
37-7102	Wells 7, 8, 10, and 11	9.00	4039.49	9.00	4039.49
37-21151	Well 12	3.35	1503.59	2.06	924.60
37-21465	Well 13	2.23	1000.90	2.23	0.00
37-7147	Mountain Domestic Water Well	0.15	67.33	0.15	67.33
37-8834	Mountain Domestic Water Well	0.10	44.88	0.10	44.88
37-8835	Thermal Well	0.59	264.81	0.59	264.81
<b>Total System</b>		<b>20.83</b>	<b>9349.18</b>	<b>19.54</b>	<b>7769.29</b>
River Run System		0.84	377.02	0.84	377.02
Main System		19.99	8972.16	18.70	7392.27

**Sun Valley/Elkhorn System Peak Hour Demand and Peak Hour Demand/Equivalent Connection Review**

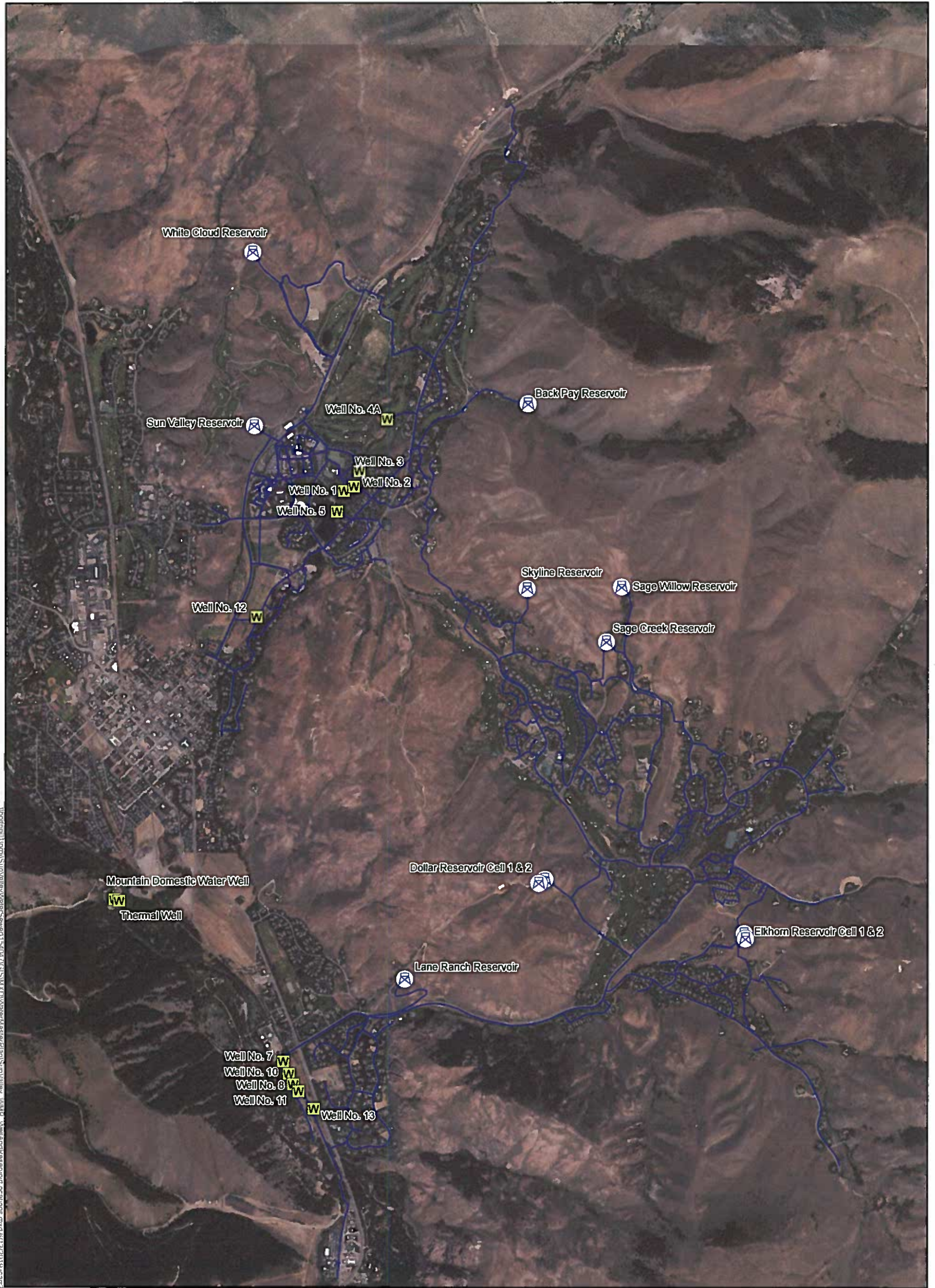
<b>Total System Peak Hour Demand, (gpm) 7-20-2003</b>	9612
Main System Peak Hour Demand, (gpm) 7-20-2003	9235
River Run System Peak Hour Demand, (gpm) 7-20-2003	377
<b>Total System Peak Hour Demand Shortfall\Excess, (gpm)</b>	2767
<b>Total System Equivalent Connection Units (ECU), 7-20-2003</b>	2788
Main System Equivalent Connection Units (ECU), 7-20-2003	2778
River Run System Equivalent Connection Units (ECU), 7-20-2003	10
<b>Peak Hour Demand/ECU for the Total System, (gpm/ECU) 7-20-2003</b>	3.45

**Sun Valley Water and Sewer District Reservoir Summary**

<b>Reservoir, (1)</b>	<b>Volume (gallons)</b>	<b>Peak Hour Diversion Rate (via gravity, not pumping), July 20, 2003 (gallons/minute)</b>
Lane Ranch	400,000	NA, (2)
Elkhorn Cell 1 & 2	586,000	0
Sun Valley	633,300	0
Dollar Cell 1 & 2	394,000	1,658
Backpay	492,500	265
Sage Creek	401,800	1,057
Skyline	201,000	98
Sage Willow	176,100	0
White Cloud	400,000	NA, (2)
<b>Total</b>	<b>3,684,700</b>	<b>3,078</b>

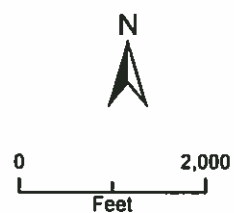
(1) Refer to the attached Figure entitled "Well and Reservoir Locations."

(2) Reservoir was not constructed at the time of the Peak Hour Event on July 20, 2003.



I:\Projects\14001\Sun Valley Water Sewer\14001\GIS\Map\K\WaterMasterPlan\Sun Valley - WMP - Water and Reservoir Locations.mxd 6/13/2019 10:38:33

- Legend**
-  Reservoir
  -  Well
  -  Existing Piping



Well and Reservoir Locations  
Sun Valley Water and  
Sewer District

**JACOBS**